

# Heartland™

FROM **ATTABOX™** | A BRAND OF **ROBROY®** ENCLOSURES

## **Proven Protection From Reliable Material Performance In Aggressive Environments**

The **Heartland** (AH) Series are high performance, polycarbonate enclosures applicable for heavy industrial conditions, but with a refined style suitable for commercial, industrial and OEM design applications.

The polycarbonate resin in the **Heartland** Series attained the best available “F1” rating, having passed critical tests for UV exposure and water immersion.

**Heartland** Series enclosures are rain-tight and watertight rated for use in both interior and exterior applications. Material ratings, as well as product ratings, assure the user that polycarbonate is designed to perform, without adverse affects, in cold weather applications.

Of significant protective value: corrosion-resistant polycarbonate can be effectively used across a wide range of aggressive environments.

## **HEARTLAND SERIES ATTRIBUTES**

- Latches and hinges do not penetrate enclosure
- Easy to remove lid
- High performance inserts
- Integrated padlock hasp
- Flush-fit side mount swing panel and DIN rail system
- Molded in bosses
- Multi-directional mounting feet
- Available in standard opaque or clear cover options



**Heartland** | Opaque (AH)

## **HEARTLAND SERIES INDUSTRY STANDARDS**

<b>UL/cUL File #</b>	E319779
<b>NEMA Ratings (UL508A, UL50 &amp; UL50e)</b>	1, 3R, 4, 4X, 6P, 12
<b>IEC 60529 Ratings</b>	IP66, IP68
<b>Temperature Range</b>	(-20°F to +240°F) (-29°C to +115°C)
<b>Flammability Rating</b>	UL94-5VA, UL94-V0
<b>Self Extinguishing</b>	Non-halogenated, non-flame propagating
<b>Certifications</b>	cULus, CE, REACH, RoHS
<b>Outdoor UV Exposure (UL 746C)</b>	(f1) Rated
<b>Chemical Resistance</b>	Visit AttaBox.com



**Heartland** | Clear (AH\_C)

## Heartland | Opaque

HINGED, LATCHED, PADLOCKABLE



### CONSTRUCTION

<b>Material (Box &amp; Cover)</b>	Polycarbonate with UV inhibitors
<b>Gasket Material</b>	Neoprene rope style, Poured polyurethane seamless gasket on select sizes
<b>Cover Screw Material</b>	304 Stainless Steel
<b>Mounting Bosses</b>	Panel mounting capability for fixed rear panel
<b>Back Panel Screw Size</b>	#10-32x3/8
<b>Metal Inserts</b>	All threaded brass inserts accepting #10-32 screws
<b>Cover Screw Size</b>	#10-32 x 5/8
<b>Cover Screw Torque</b>	20-24 in.-lbs.
<b>Mounting Feet Inserts</b>	1/4-20x1/2
<b>Mounting Feet Torque</b>	14-16in.-lbs
<b>Hinge and Latch Hardware</b>	Polycarbonate with UV inhibitors
<b>Side Mount Solutions</b>	Variable height side mount capability

### INDUSTRY STANDARDS

<b>UL/cUL File #</b>	E319779
<b>NEMA Ratings (UL508A, UL50 &amp; UL50e)</b>	1, 3R, 4, 4X, 6P, 12
<b>IEC 60529 Ratings</b>	IP66, IP68
<b>Temperature Range</b>	(-20°F to +240°F) (-29°C to +115°C)
<b>Flammability Rating</b>	UL94-5VA
<b>Self Extinguishing</b>	Non-halogenated, non-flame propagating
<b>Certifications</b>	cULus, CE, REACH, RoHS
<b>Outdoor UV Exposure (UL 746C)</b>	(f1) Rated
<b>Chemical Resistance</b>	Refer to AttaBox.com

## Heartland | Clear

HINGED, LATCHED, PADLOCKABLE

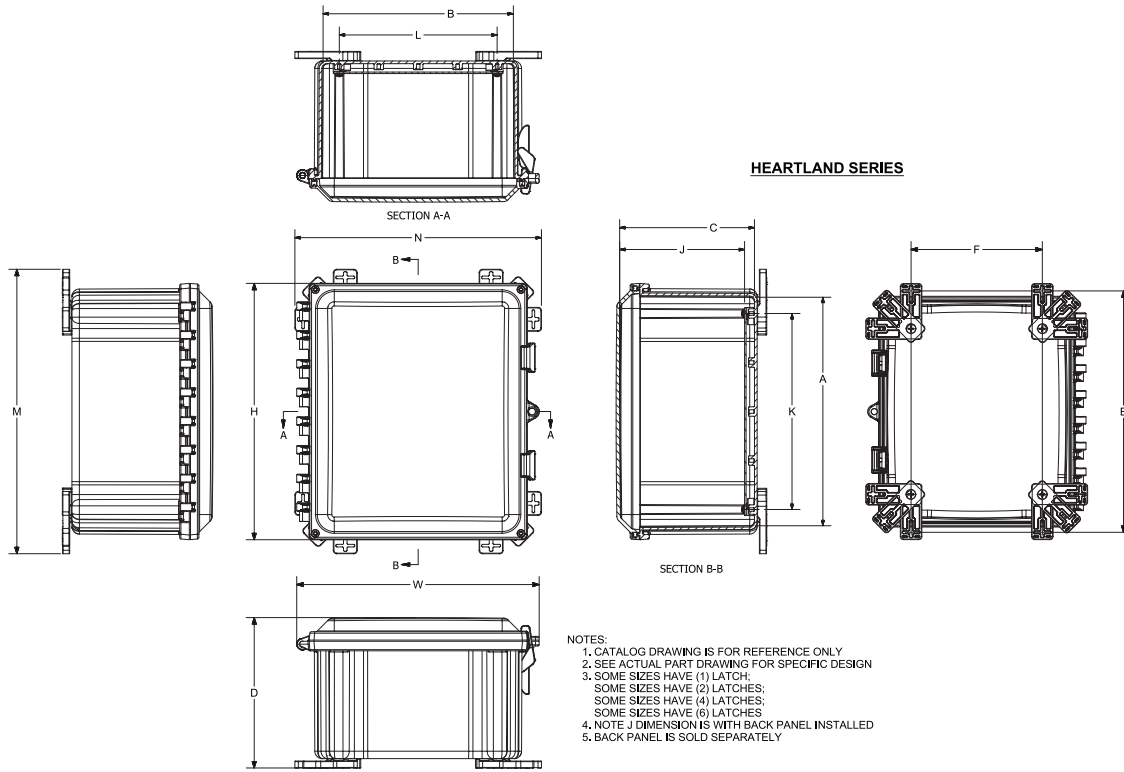


### CONSTRUCTION

<b>Material (Box &amp; Cover)</b>	Polycarbonate with UV inhibitors
<b>Gasket Material</b>	Neoprene rope style, Poured polyurethane seamless gasket on select sizes
<b>Cover Screw Material</b>	304 Stainless Steel
<b>Mounting Bosses</b>	Panel mounting capability for fixed rear panel
<b>Back Panel Screw Size</b>	#10-32x3/8
<b>Metal Inserts</b>	All threaded brass inserts accepting #10-32 screws
<b>Cover Screw Size</b>	#10-32 x 5/8
<b>Cover Screw Torque</b>	20-24 in.-lbs.
<b>Mounting Feet Inserts</b>	1/4-20x1/2
<b>Mounting Feet Torque</b>	14-16in.-lbs
<b>Hinge and Latch Hardware</b>	Polycarbonate with UV inhibitors
<b>Side Mount Solutions</b>	Variable height side mount capability

### INDUSTRY STANDARDS

<b>UL/cUL File #</b>	E319779
<b>NEMA Ratings (UL508A, UL50 &amp; UL50e)</b>	1, 3R, 4, 4X, 6P, 12
<b>IEC 60529 Ratings</b>	IP66, IP68
<b>Temperature Range</b>	(-20°F to +240°F) (-29°C to +115°C)
<b>Flammability Rating</b>	UL94-V0
<b>Self Extinguishing</b>	Non-halogenated, non-flame propagating
<b>Certifications</b>	cULus, CE, REACH, RoHS
<b>Outdoor UV Exposure (UL 746C)</b>	(f1) Rated
<b>Chemical Resistance</b>	Refer to AttaBox.com



**HEARTLAND SERIES DIMENSIONS**

SIZE ID NUMBER	OVERALL H X W X D	INSIDE A X B X C	MOUNTING HOR. E X F	MOUNTING VER. E X F	MOUNTING 45 E X F	J	K	L	M	N	SHIPPING WEIGHT	PANEL NUMBER
AH664 AH664C	7.41 x 8.68 x 5.84 (188 x 223 x 148)	5.94 x 5.94 x 5.02 (151 x 151 x 127)	3.64 x 8.40 (93 x 213)	8.04 x 3.64 (204 x 93)	6.75 x 6.74 (171 x 171)	4.50 (114)	4.25 (108)	4.25 (108)	8.89 (226)	8.89 (226)	2.50 lbs.	BP66**
AH864 AH864C	9.41 x 8.68 x 5.86 (239 x 223 x 149)	7.97 x 5.97 x 5.07 (202 x 152 x 129)	5.64 x 8.04 (143 x 213)	10.04 x 3.64 (255 x 93)	8.76 x 6.75 (223 x 171)	4.56 (116)	6.25 (159)	4.25 (108)	10.89 (277)	8.89 (226)	3.19 lbs.	BP86**
AH884 AH884C	9.41 x 10.68 x 5.86 (239 x 271 x 149)	7.97 x 7.97 x 5.03 (202 x 202 x 128)	5.63 x 10.03 (143 x 255)	10.04 x 5.63 (255 x 143)	8.74 x 8.78 (222 x 223)	4.53 (115)	6.25 (159)	6.25 (159)	10.88 (277)	10.88 (277)	CF	BP88**
AH1084 AH1084C	11.41 x 10.68 x 6.36 (290 x 271 x 161)	9.96 x 7.96 x 5.57 (253 x 202 x 142)	7.64 x 10.04 (194 x 255)	12.04 x 5.64 (306 x 143)	10.76 x 8.75 (273 x 222)	5.05 (128)	8.25 (210)	6.25 (159)	12.89 (327)	10.89 (277)	4.31 lbs.	BP108**
AH1086 AH1086C	11.41 x 10.68 x 7.89 (209 x 271 x 200)	9.95 x 7.95 x 7.06 (253 x 202 x 179)	7.63 x 10.03 (194 x 255)	12.03 x 5.63 (306 x 143)	10.76 x 8.75 (273 x 222)	6.54 (166)	8.25 (210)	6.25 (159)	12.88 (327)	10.88 (277)	CF	BP108**
AH10106 AH10106C	11.41 x 12.68 x 6.97 (209 x 322 x 177)	9.95 x 9.95 x 6.15 (253 x 253 x 156)	7.63 x 12.03 (194 x 306)	12.03 x 7.63 (306 x 194)	10.76 x 10.75 (273 x 273)	5.65 (144)	8.25 (210)	8.25 (210)	12.88 (327)	12.88 (327)	CF	BP1010**
AH12106 AH12106C	13.40 x 12.68 x 7.86 (340 x 322 x 200)	11.95 x 9.95 x 7.07 (304 x 253 x 180)	9.64 x 12.04 (245 x 306)	14.04 x 7.64 (357 x 194)	12.76 x 10.75 (324 x 273)	6.56 (167)	10.25 (260)	8.25 (210)	14.89 (378)	12.89 (327)	6.19 lbs.	BP1210**
AH14126 AH14126C	15.40 x 14.68 x 7.86 (391 x 373 x 200)	13.95 x 11.95 x 7.07 (354 x 304 x 180)	11.64 x 14.04 (296 x 357)	16.04 x 9.64 (407 x 245)	14.76 x 12.75 (375 x 324)	6.56 (167)	12.25 (311)	10.25 (260)	16.89 (429)	14.89 (378)	7.99 lbs.	BP1412**
AH16148 AH16148C	17.65 x 16.68 x 9.98 (448 x 424 x 253)	15.93 x 13.93 x 9.20 (405 x 354 x 234)	13.64 x 16.04 (347 x 407)	18.04 x 11.64 (458 x 296)	16.76 x 14.75 (426 x 375)	8.68 (220)	14.25 (362)	12.25 (311)	18.89 (480)	16.89 (429)	10.00 lbs.	BP1614**
AH181610 AH181610C	19.41 x 18.68 x 11.90 (493 x 474 x 302)	17.83 x 15.83 x 11.08 (453 x 402 x 281)	15.64 x 18.04 (397 x 458)	20.04 x 13.64 (509 x 347)	18.75 x 16.74 (476 x 425)	10.56 (268)	16.25 (413)	14.25 (362)	20.89 (531)	18.89 (480)	11.25 lbs.	BP1816**
AH18164 AH18164C	19.41 x 18.68 x 5.41 (493 x 474 x 137)	18.16 x 16.16 x 5.08 (461 x 410 x 129)	N/A	20.50 x 13.50 (521 x 343)	N/A	4.56 (116)	16.25 (413)	14.25 (362)	21.75 (552)	N/A	CF	BP1816**
AH20168 AH20168C	21.41 x 18.68 x 9.97 (544 x 474 x 253)	19.86 x 15.86 x 9.15 (504 x 403 x 232)	18.75 x 19.17 (476 x 487)	23.15 x 14.75 (588 x 375)	21.91 x 17.87 (557 x 454)	8.65 (220)	18.25 (464)	14.25 (362)	24.00 (610)	20.02 (509)	CF	BP2016**
AH242410 AH242410C	25.41 x 26.68 x 11.41 (645 x 678 x 290)	23.91 x 23.91 x 11.88 (607 x 607 x 302)	N/A	25.69 x 18.00 (653 x 457)	N/A	10.56 (268)	22.25 (565)	22.25 (565)	26.69 (678)	21.86 (555)	CF	BP2424**

All measures are in inches, items in parentheses are in millimeters.

\* AH18164 size does not exhibit same mounting foot design. Mounting feet are molded into the box rather than installed separately.

\*\* Panel sold separately

ACCESSORIES



Includes mounts, screws and panel.

**ALUMINUM SWING PANEL KITS**

CATALOG NUMBER	FITS
AH66SPK	6 x 6
AH86SPK	8 x 6
AH88SPK	8 x 8
AH108SPK	10 x 8
AH1010SPK	10 x 10
AH1210SPK	12 x 10
AH1412SPK	14 x 12
AH1614SPK	16 x 14
AH1816SPK	18 x 16
AH2016SPK	20 x 16
AH2424SPK	24 x 24

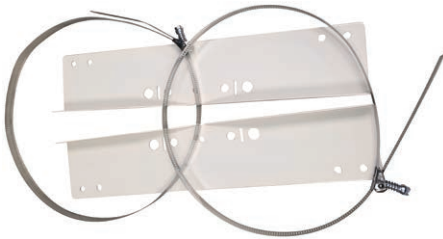
**ABS SWING PANEL KITS**

CATALOG NUMBER	FITS
AH66SPABS	6 x 6
AH86SPABS	8 x 6
AH88SPABS	8 x 8
AH108SPABS	10 x 8
AH1010SPABS	10 x 10
AH1210SPABS	12 x 10
AH1412SPABS	14 x 12
AH1614SPABS	16 x 14
AH1816SPABS	18 x 16
AH2016SPABS	20 x 16
AH2424SPABS	24 x 24

**DIN RAILS**

CATALOG NUMBER	FITS	DESCRIPTION
AH6DRK	6"	Kit Includes a DIN rail that fits size indicated, plus two custom slot nuts, and two thread forming screws used for mounting to back of enclosure.
AH8DRK	8"	
AH10DRK	10"	
AH12DRK	12"	
AH14DRK	14"	
AH16DRK	16"	
AH18DRK	18"	
AH20DRK	20"	
AH24DRK	24"	
AH6DR	6"	
AH8DR	8"	
AH10DR	10"	
AH12DR	12"	
AH14DR	14"	
AH16DR	16"	
AH18DR	18"	
AH20DR	20"	
AH24DR	24"	

**Pole Mount**



Kit fits enclosure side that will be mounted perpendicular to pole. Comes with top and bottom flanges, stainless steel straps, and mounting screws.

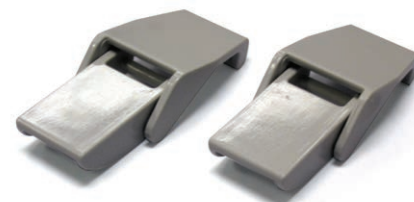
CATALOG NUMBER
PM6-8
PM10-12
PM14-16
PM18-24



AHSNK



AHSPMK



AHLK



AHAK

**ACCESSORIES**

CATALOG NUMBER	DESCRIPTION
AHSNK	Slot Nut Kit (includes two nuts & two screws)
AHSPMK	Swing Panel Mounts (4 per kit)
AHLK	Latch Kit (2 latches per kit) - replacement only
AHAK	Accessory Kit (includes all screws, inserts and mounting feet) - replacement only
AHTSKSS	Kit includes two stainless steel thumb screws, and two plastic backers.
AHTSKAL	Kit includes two aluminum thumb screws, and two plastic backers.