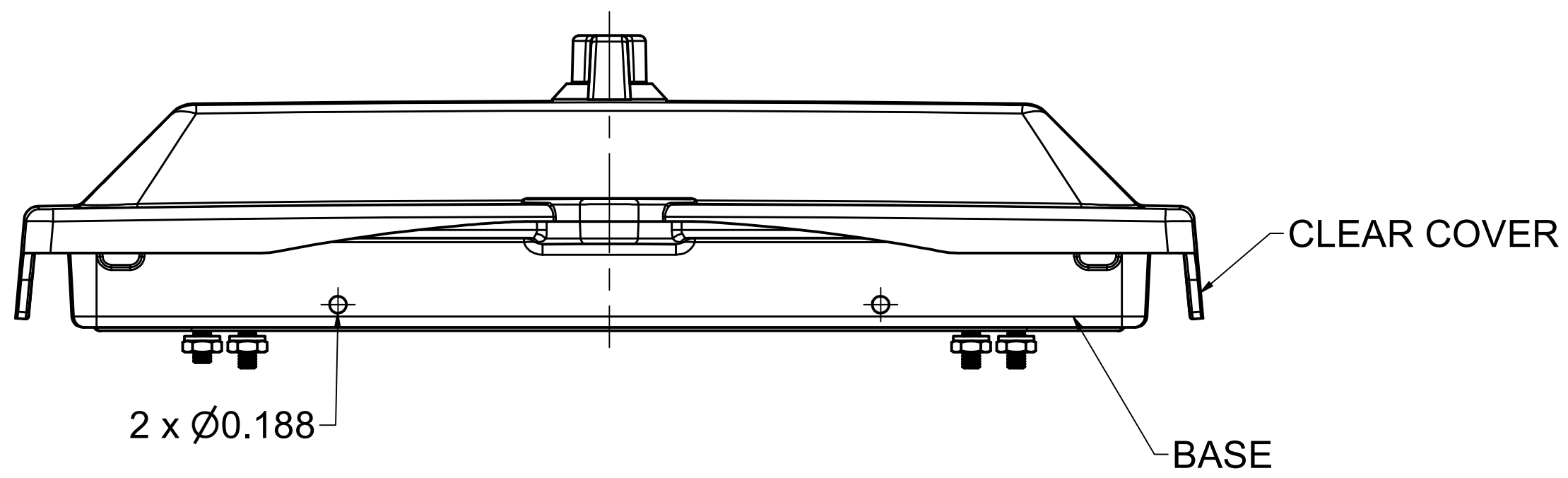
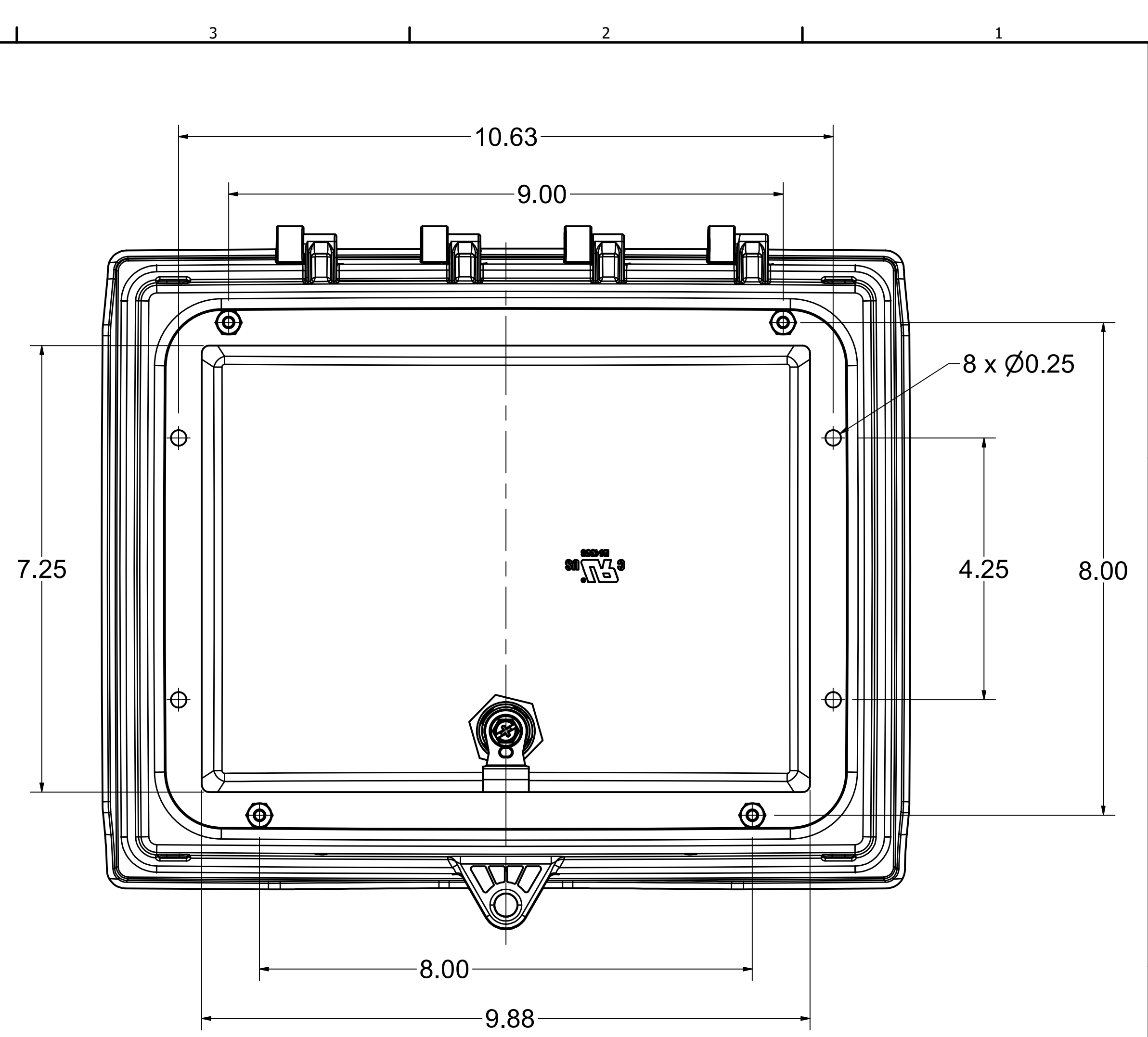
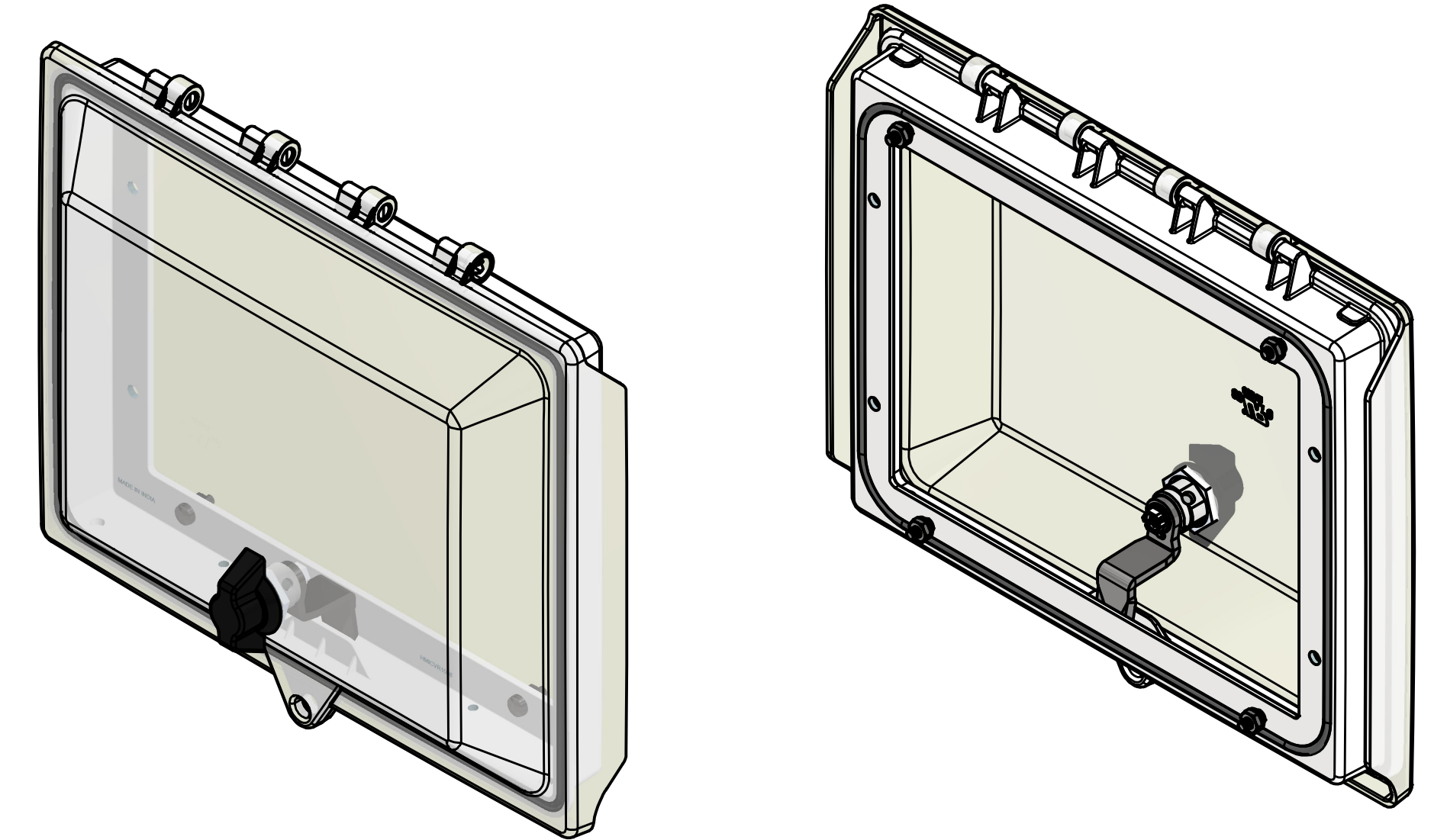


PU GASKET
SECTION A-A




PART LIST				
POS. NO	DESCRIPTION	QUANTITY	MATERIAL	COLOR
1	BASE	1	POLYCARBONATE	PANTONE 428 C
2	CLEAR COVER	1	POLYCARBONATE	CLEAR
3	WING KNOB QUARTER TURN LOCK	1	ZINC POWDER COATED	N/A
4	HARDWARE KIT	1	STAINLESS STEEL	N/A



THE INFORMATION CONTAINED IN THIS DRAWING IS THE SOLE PROPERTY OF ROBROY INDUSTRIES. ANY REPRODUCTION IN PART OR WHOLE WITHOUT THE WRITTEN PERMISSION OF ROBROY INDUSTRIES IS PROHIBITED. ALL RIGHTS RESERVED UNDER THE COPYRIGHT LAWS. COPYRIGHT © 2024 ROBROY INDUSTRIES. ROBROY INDUSTRIES VALUES AND PROTECTS ITS INTELLECTUAL PROPERTY. FOR MORE INFORMATION VISIT www.robroy.com/patents

SPECIAL REQUIREMENTS
 HARDWARE KIT PARTS IN SEALED POUCH
 • # 10-32 x 5/8 SS 304 PHILIP DRIVE PAN HEAD SCREWS - 4 Nos.
 (ALT)
 • M5 X 5/8 SS 304 SLOTTED CHEESE HEAD SCREW - 4 Nos
 • SS WASHERS - 8 Nos.
 • SS 304 #10-32 NUT (ALT) M5 NUT - 4 Nos.
 • INSTRUCTION SHEET - 1 No.
 • DRILL TEMPLATE - 1 No.
 PROVIDE LABEL ON CARTON

NEMA 250 TYPE	4X	IEC 60529	STANDARD PIN	ALL DIMENSIONS ARE IN INCHES UNLESS OTHERWISE SPECIFIED	TOLERANCES UNLESS SPECIFIED	.XX +0.03	.XXX ±0.010
COLOR		COLOR STANDARD	CUSTOMER DWG.	 A ROBROY Brand			
MATERIAL	REFER MATERIAL SPEC						
REVISION HISTORY				DRAWN BY AA	DATE 9/3/2021	CUSTOMER	DRAWING HMICVR1008C
REV	DESCRIPTION	DATE	ENG.	SCALE	DO NOT SCALE	PART NUMBER	ATHMICVR1008C

Robroy Enclosures
 500 Maple Street
 Belding, Michigan 48809
 Phone: 616-794-0700
 Fax: 616-749-3378