

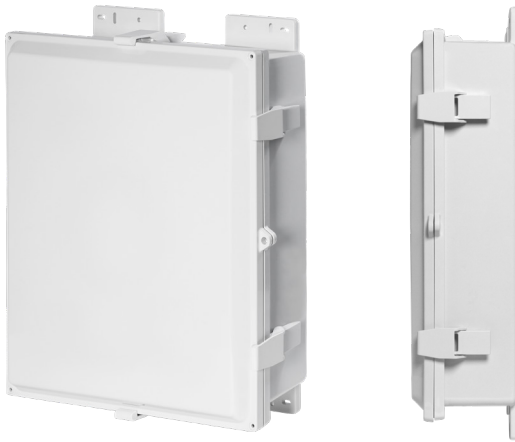
HEARTLAND® SL™

Low-Profile Polycarbonate Enclosures

AttaBox
A ROBROY Brand

ALL THE MOUNTING SPACE, WITHOUT THE ADDED DEPTH!

Get the most out of your installation space with AttaBox Heartland SL! Tough, industrial strength enclosures designed for OEMs and installers with low-profile installation requirements. Ideal for use on building exteriors and in tight spaces, they protect equipment and optimize depth while maintaining a traditional footprint!



MARKETS AND INDUSTRIES

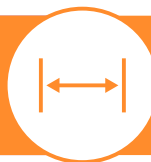
- + Ideal for Non-Hazardous Industrial and Commercial OEM market segments where space is a premium.
- + Low-profile enclosure optimizes the installation and protection of network components (routers and switches) in harsh conditions.
- + Electrical control, wireless communications, measurement, monitoring, and security applications with minimal-depth equipment.

MATERIALS:

- + **Enclosure:** Polycarbonate with UV inhibitors
- + **Latches:** Available in either Polycarbonate or Stainless Steel
- + **Hardware:** Stainless Steel

INNOVATION

Innovative, low-profile design,
industry standard height/width



VALUE

Saves space, eliminates
unnecessary depth, reduces
material cost

Robust, smooth side
walls



Long dependable product life,
maximum fitting mounting
space

Aesthetic, low-profile
design

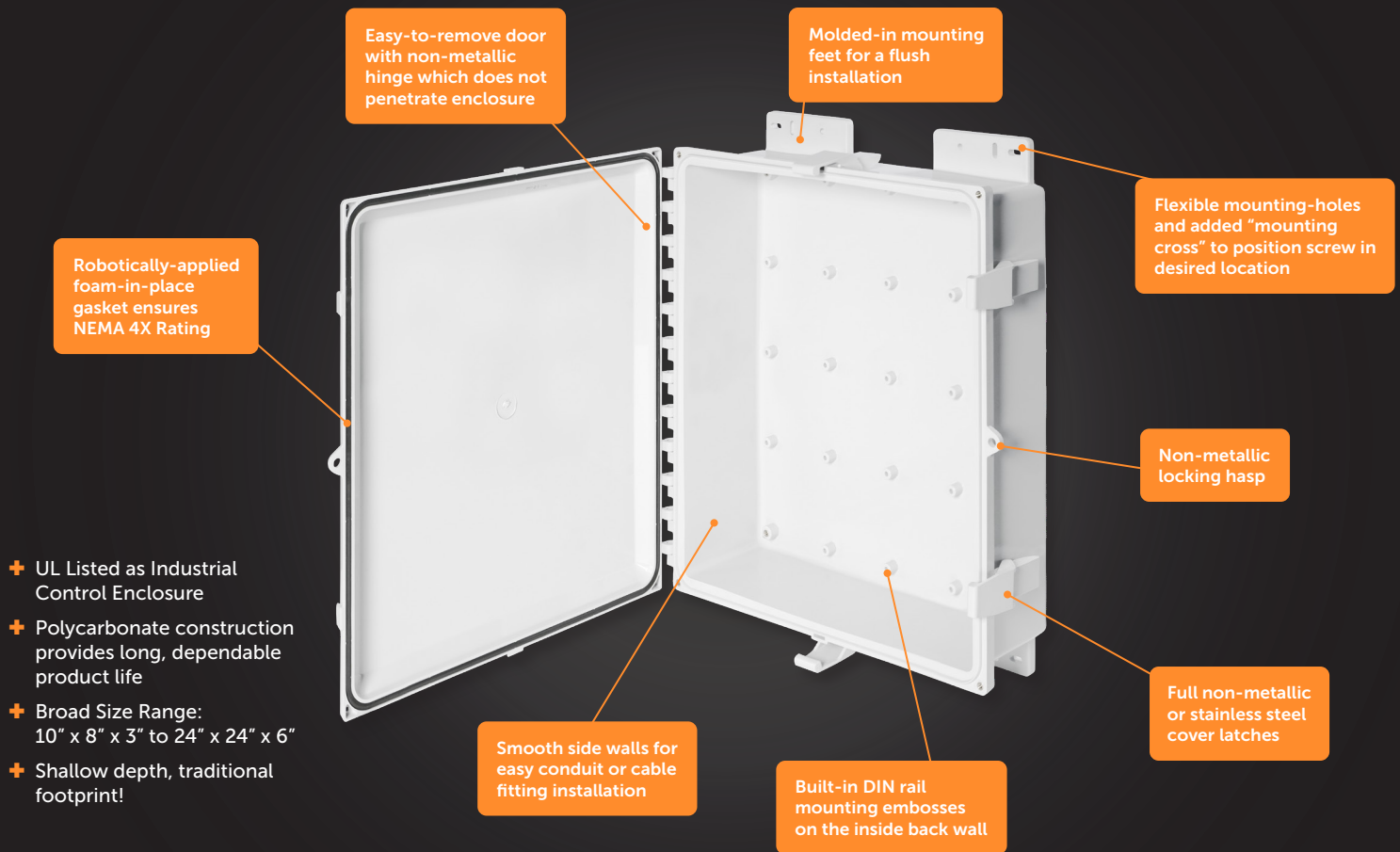


Offers a clean look for brand
promotion in areas of high
visibility

Installation flexibility, added DIN
rail embosses, multiple mounting
hole positions



Reduces need for costly back panel
material and on-site modifications



INNOVATIVE FEATURES

- + Available in seven sizes from 10" x 8" x 3" to 24" x 24" x 6"
- + One enclosure, one solution - can be configured as hinged/screw cover or hinged/latched cover
- + Lightweight, high-impact rated, UV resistant polycarbonate material construction
- + Non-metallic hinge does not penetrate inside enclosure
- + Thick, robust side wall construction eliminates side wall flexing
- + Built-in DIN rail mounting embosses in the back of the enclosure
- + ABS back panel option to optimize wireless signal transmission
- + Shallow design is ideal for low profile applications and equipment
- + Latch options – fully non-metallic or stainless steel
- + Clear or opaque cover options
- + Stainless steel hardware included
- + Larger sizes are compatible with Stahlin SolarShield HMI Cover



RATINGS AND LISTINGS

- + NEMA 10250, UL 50, UL 50e, UL 508A
- + cULus Listed / CSA Std. C22.2
- + Type 1, 3R, 4, 4X, 6P, 12
- + IEC Ingress Rating: IP66, IP68, as designated
- + Flammability Rating: UL94-5VA
- + Outdoor Exposure UL 746C: (f1) Rated
- + Operating Temperature Rating: -40°F to +248°F (-40°C to +120°C)
- + Certifications and Compliance: cULus, CE, REACH, and RoHS

Back panels available in ABS material to optimize wireless signal transmission



Optional ABS back panel

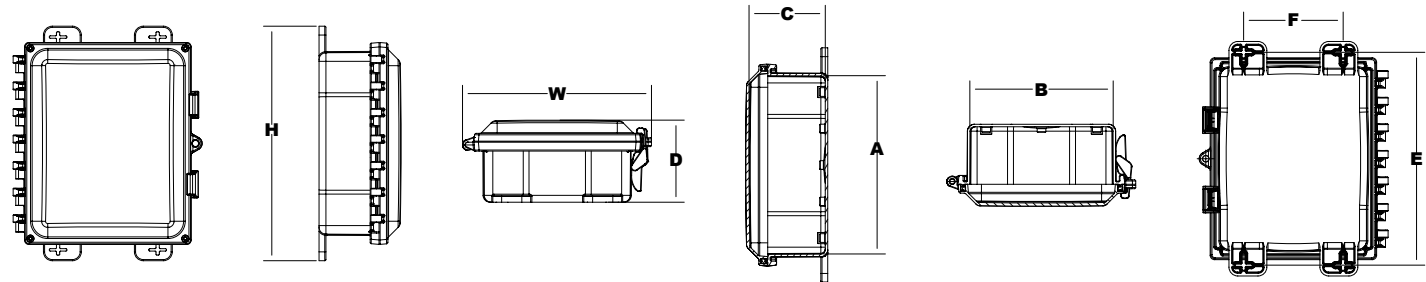


CATALOG NUMBERS AND DIMENSIONS

All dimensions listed in inches

Heartland SL Low-Profile Polycarbonate Enclosures					
Enclosure Size	Opaque Cover Catalog Number	Clear Cover Catalog Number	Opaque Cover with Stainless Steel Latches Catalog Number	Clear Cover with Stainless Steel Latches Catalog Number	Back Panel Catalog Number
10 x 8 x 3	AH1083	AH1083C	AH1083SS	AH1083CSS	BP108*
12 x 10 x 4	AH12104	AH12104C	AH12104SS	AH12104CSS	BP1210*
14 x 12 x 4	AH14124	AH14124C	AH14124SS	AH14124CSS	BP1412*
16 x 14 x 4	AH16144	AH16144C	AH16144SS	AH16144CSS	BP1614*
18 x 16 x 4	AH18164	AH18164C	AH18164SS	AH18164CSS	BP1816*
20 x 16 x 4	AH20164	AH20164C	AH20164SS	AH20164CSS	BPJ2016*
24 x 24 x 6	AH24246	AH24246C	AH24246SS	AH24246CSS	BP2424PC*

*Add suffix for material desired: AL = aluminum, CS = carbon steel, ABS = ABS material



In-Depth Dimensions			
Enclosure Size	Overall H x W x D	Inside H x W x D	Mounting Feet E x F
10 x 8 x 3	13.25 x 10.68 x 4.64	10.07 x 8.10 x 4.31	12.03 x 5.63
12 x 10 x 4	15.25 x 12.68 x 5.38	12.09 x 10.09 x 5.05	14.03 x 7.63
14 x 12 x 4	16.88 x 14.68 x 5.39	14.09 x 12.06 x 5.20	16.03 x 9.63
16 x 14 x 4	19.25 x 16.68 x 5.35	16.15 x 14.15 x 5.07	18.03 x 11.63 / 18.03 x 8.00*
18 x 16 x 4	21.75 x 18.68 x 5.41	18.15 x 16.15 x 5.08	20.50 x 13.50 / 20.50 x 7.84*
20 x 16 x 4	23.25 x 18.68 x 5.47	20.09 x 16.12 x 5.14	22.03 x 13.63 / 22.03 x 10.00*
24 x 24 x 6	26.73 x 26.68 x 7.41	24.13 x 24.14 x 7.08	25.73 x 18.00

*Second set of dimensions indicates inside mounting position



**500 Maple Street
Belding, MI 48809**

**O: (616) 794-0700
E: csr@robroyenclosures.com**

attabox.com