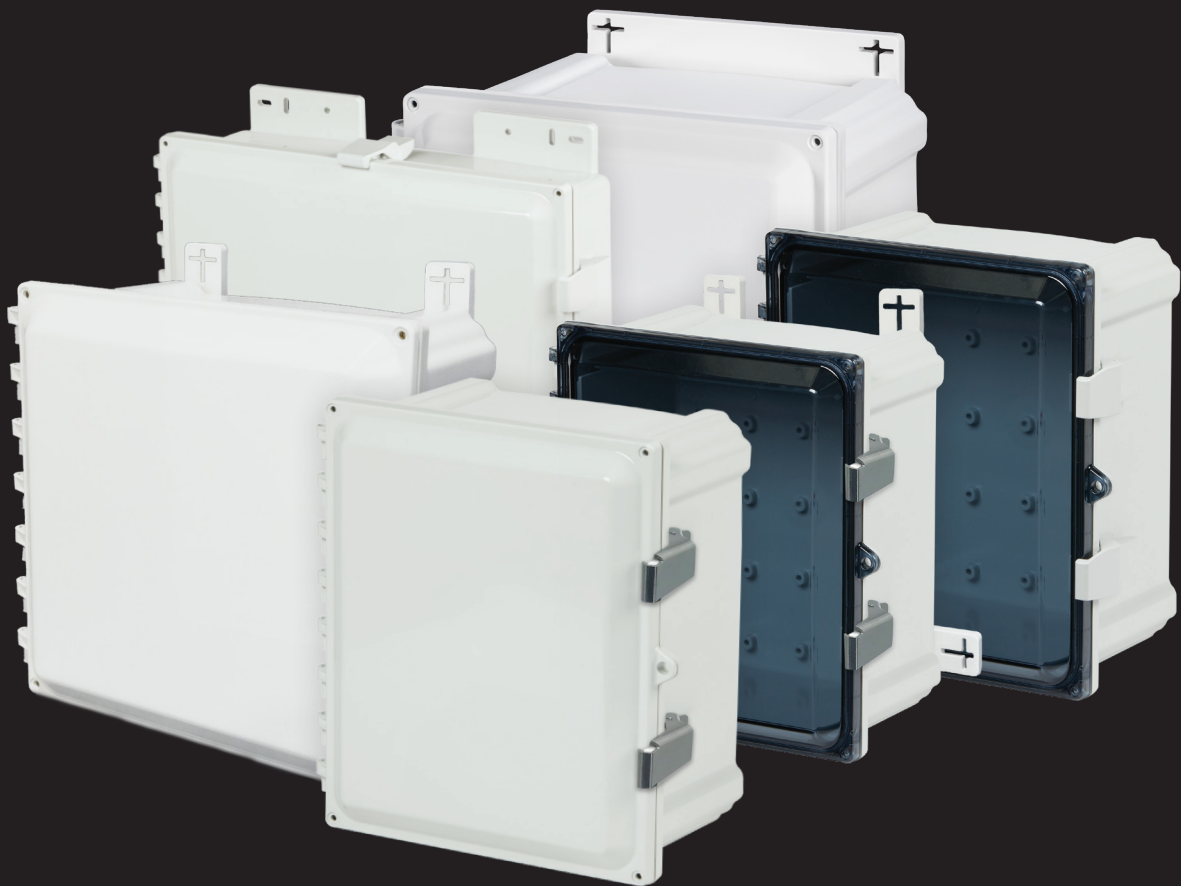


# HEARTLAND® SERIES

POLYCARBONATE ENCLOSURES

---

The most innovative, durable, and reliable  
polycarbonate enclosures available!



# ATTABOX HEARTLAND ENCLOSURES

are ideally suited for:



## RUGGED APPLICATIONS REQUIRING ENCLOSURE STRENGTH

Over 40% stronger than the competition\*, AttaBox's thick, robust side walls eliminate flexing. Heavy-duty and durable, they are produced from a polycarbonate material formulation which provides high-impact resistance and dimensional stability. Our enclosures are popular and reliable in industrial and manufacturing applications within continuously demanding environments.

*\*Results of independent testing conducted with off-the-shelf competitive polycarbonate enclosures.*



## APPLICATIONS WITH LIKELY NEED FOR IMPACT RESISTANCE

Metal enclosures are vulnerable to denting upon impact, which, along with aesthetic concerns, can compromise the integrity of the seal that protects everything housed within the enclosure. Although AttaBox polycarbonate has a lighter weight than other materials, it boasts a higher impact resistance.



## APPLICATIONS REQUIRING CORROSION RESISTANCE

AttaBox polycarbonate enclosures are available with full non-metallic or stainless steel cover latches and full non-metallic hinges that don't penetrate the enclosure and meet NEMA Type 4X requirements, which specifies an increased level of protection from corrosion. Because of this, we meet the demands of diverse industries from oil and gas to carwashes to marine environments.



## APPLICATIONS WHERE EASE OF MODIFICATION IS IMPORTANT

AttaBox polycarbonate enclosures are easy to modify using standard tools for cutting holes, windows, vents, and drains. They cut cleanly without dust and resist delamination. Our ModRight program offers value-add factory design, engineering, and modification to help customers solve demanding product application challenges.



## APPLICATIONS WHERE INSTALLATION AND LABOR ARE CHALLENGES

Polycarbonate, compared with metal enclosures, is lightweight, making it easier and quicker to install; thereby being of value in overall cost reduction.



## APPLICATIONS WHERE UV RESISTANCE IS IMPORTANT

Because of natural resistance to UV degradation, polycarbonate enclosures can weather the passage of time, even in harsh exterior applications. AttaBox polycarbonate enclosures carry an f1 rating for outdoor use per UL 746C.



## APPLICATIONS USING WIRELESS TECHNOLOGY

AttaBox polycarbonate enclosures are ideal for protecting wireless technology because they allow wireless and radio frequency signals to pass unobstructed through the enclosure. This allows you to have antennas inside of the enclosure. Additionally, when ordered through our ModRight program, there is the option to block EMI/REI frequencies if needed, giving you more flexibility than metal enclosures.

# HEARTLAND® ENCLOSURES

AttaBox® Heartland® Enclosures are designed to be used in a variety of outdoor or indoor applications. They provide superior protection against rain, sleet, snow, splashing water, hose-directed water, submersion, sun/UV, and flames.



Self-extinguishing, non-halogenated, and non-flame propagating, AttaBox's Heartland Series is the most innovative, durable, and reliable polycarbonate enclosure available.

## SUPERIOR PROTECTION AGAINST



RAIN, SLEET  
& SNOW



SPLASHING &  
HOSE-DIRECTED  
WATER



SUBMERSION\*



SUN/UV



FLAMES

\*NEMA 6P and IP68 on sizes 18 x 16 and smaller. Four screw cover attachment required.

## INNOVATIONS AND FEATURES

- + One enclosure, one solution, one price! Enclosure can be configured as hinged with screw cover or hinged with latched cover
- + Fully non-metallic hinge, does not penetrate inside enclosure
- + Thick, robust side wall construction eliminates side wall flexing
- + Built-in DIN Rail mounting embosses in the back of the enclosure
- + Capability to add side panels, DIN rails, or instruments
- + Innovative Heartland SL low-profile enclosures are ideal for equipment with minimal depth and for wireless communications applications
- + Sliding T-Nut allows for infinite panel adjustments, back to front
- + Latch options: Choose from fully non-metallic, stainless, or HW configuration with latches removed
- + Clear or opaque cover options
- + Multi-directional mounting feet or flange options allow mounting flexibility
- + Aluminum back panel and swing-out panel mounting options
- + Industry leading size range: 6" x 6" to 24" x 24"
- + Compatible with AttaBox SolarShield™ HMI Cover

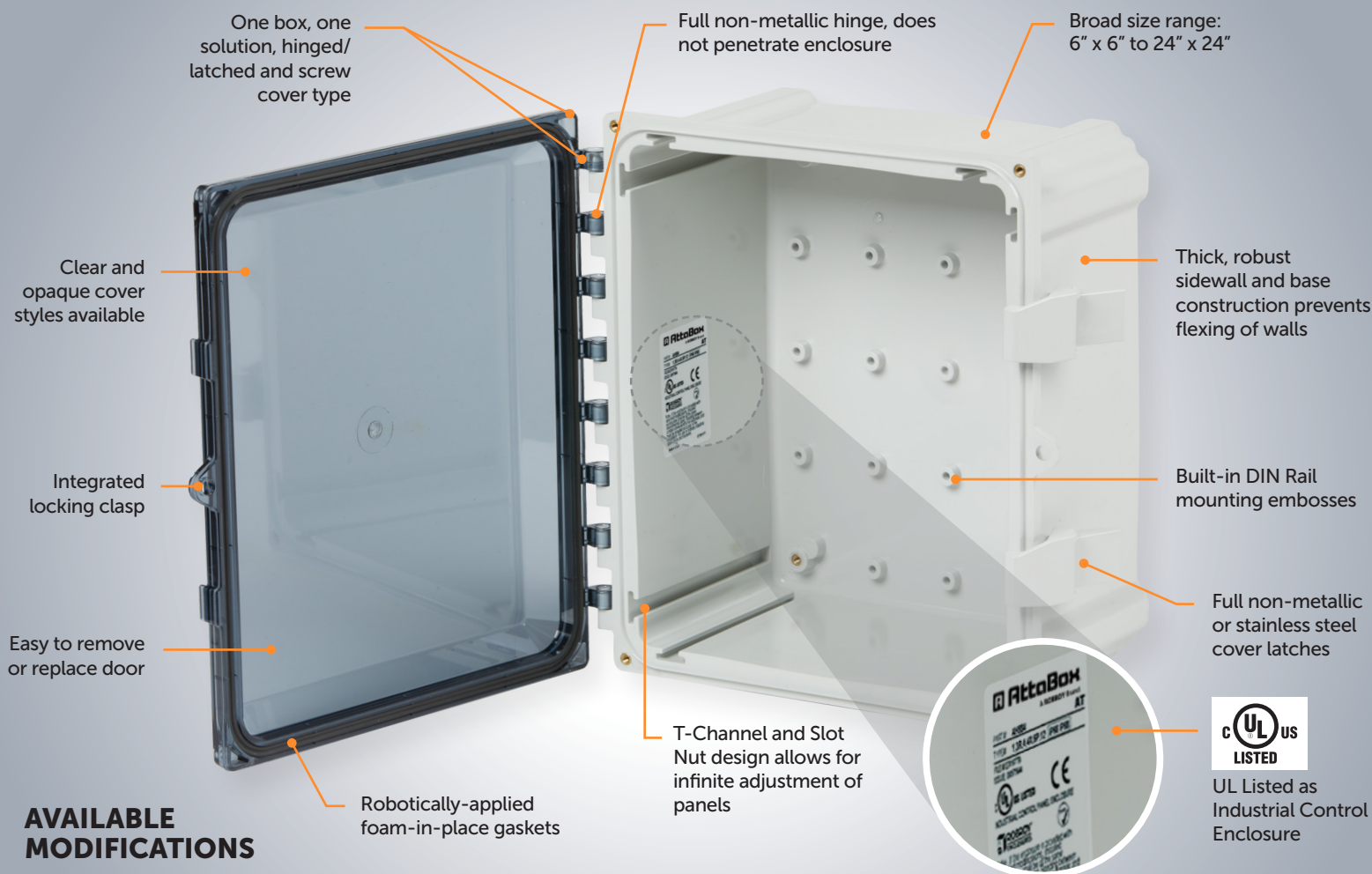
## MATERIALS AND PERFORMANCE

- + Performance: -40 °F to +248 °F (-40 °C to +120 °C)
- + UL 94 Flame Rating - 5VA (highest flame resistance)
- + UL's best rating for outdoor exposure, an "f1" per UL 746C (resin has passed tests for UV exposure and water immersion)

## RATINGS AND LISTINGS

- + NEMA 10250, UL 50, UL 50e, UL 508A
- + cULus Listed / CSA Std. C22.2
- + Type 1, 3R, 4, 4X, 6P, 12, as designated
- + IEC Ingress Rating: IP66, IP68, as designated
- + Flammability Rating: UL94-5VA
- + Outdoor Exposure UL 746C: (f1) Rated

# HEARTLAND'S INNOVATIVE FEATURES



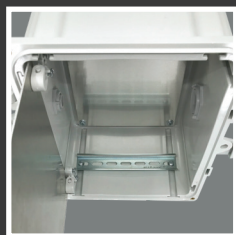
## AVAILABLE MODIFICATIONS

- + Custom holes/cutouts
- + Silk screening/digital printing
- + Custom colors



### UL 94 FLAME RATING - 5VA

Heartland enclosures provide the highest (most flame retardant) UL 94 rating available



### FLEXIBLE OPTIONS

Increases usable space and provides more mounting options:

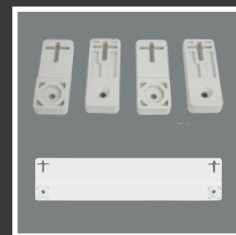
- + DIN rails
- + Back and side panel options
- + Mounting embosses in back
- + Optional weight distribution shelf



### PANEL SYSTEMS

Sub-panel mounting solution

- + Revolutionary design
- + Variable height mounting
- + Panel locks into open position
- + Mounting holes are standard JIC

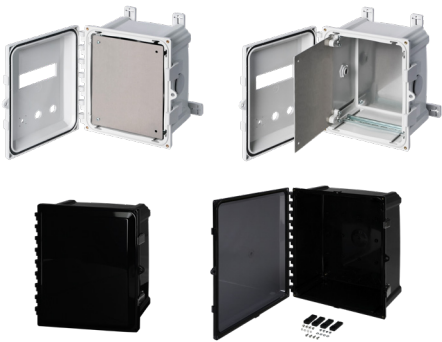


### MOUNTING SOLUTIONS

Multi-directional mounting feet or mounting flange included as means of attachment

# THE ATTABOX DIFFERENCE

## SELECT. MODIFY. DELIVER.



### SelectRight™ Program

AttaBox's extensive range of standard polycarbonate enclosures, panels, accessories, and other material options gives you the flexibility to select exactly the right non-metallic enclosures to meet the specific demands of your applications.

- + Broad selection of standard, configurable, off-the-shelf, corrosion-resistant, non-metallic enclosures to meet your applications.
- + Selection of options from available products to meet specification, reduce lead time, and optimize initial costs.
- + Product selections ready to use and available now.

### ModRight™ Program

AttaBox's ModRight Program is designed to support you in very uncommon or complex applications. From the basic product through all of its custom/modified required changes, to the moment it arrives on your doorstep for installation into your application, AttaBox ModRight offers standard and custom assistance for your every need. To receive a quotation or further information, visit [attabox.com/modright](http://attabox.com/modright).

Modifications can be mixed and matched in an endless number of combinations. They can take the form of:

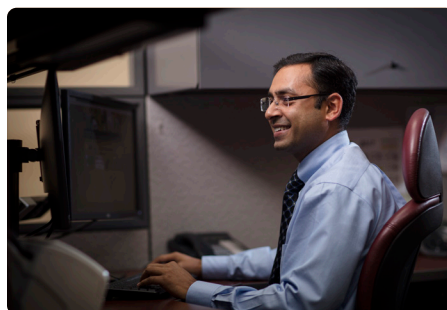
- + Custom cutouts/holes
- + Silk screening
- + Digital printing
- + EMI/RFI shielding
- + Custom mold-in colors
- + Other special requests



### DeliverRight™ Program

DeliverRight provides fast service and delivery of products ready to use when and where you need them. Value-add options are available to improve your productivity including direct shipment, bulk packaging, kitting, and custom labeling.

- + Ensures you customer-first service, supply chain, and on-time delivery.
- + A trusted partnership approach from consultation and quotation, to packaging and delivery.
- + U.S.-based manufacturing plus dedicated points of contact help manage orders and delivery.



# HEARTLAND® SERIES

## ENCLOSURES AND PANELS

### HEARTLAND ENCLOSURE WITH NON-METALLIC LATCHES



### BACK PANEL, FLANGE, AND SWING PANEL KITS



Enclosure Size	Opaque Cover w/ Mounting Feet Part #	Opaque Cover w/ Mounting Feet - No Latches Part #	Clear Cover w/ Mounting Feet Part #	Opaque Cover w/ Mounting Flange Part #	Clear Cover w/ Mounting Flange Part #	Back Panel Part #	Swing Panel Kit Part #
6 x 6 x 4	AH664	AH664HW	AH664C	AHF664	AHF664C	BP66***	AH66SPK
8 x 6 x 4	AH864	AH864HW	AH864C	AHF864	AHF864C	BP86***	AH86SPK
8 x 8 x 4	AH884	AH884HW	AH884C	AHF884	AHF884C	BP88***	AH88SPK
10 x 8 x 4	AH1084	AH1084HW	AH1084C	AHF1084	AHF1084C	BP108***	AH108SPK
10 x 8 x 6	AH1086	AH1086HW	AH1086C	AHF1086	AHF1086C	BP108***	AH108SPK
10 x 10 x 6	AH10106	AH10106HW	AH10106C	AHF10106	AHF10106C	BP1010***	AH1010SPK
12 x 10 x 6	AH12106	AH12106HW	AH12106C	AHF12106	AHF12106C	BP1210***	AH1210SPK
14 x 12 x 6	AH14126	AH14126HW	AH14126C	AHF14126	AHF14126C	BP1412***	AH1412SPK
16 x 14 x 8	AH16148	AH16148HW	AH16148C	AHF16148	AHF16148C	BP1614***	AH1614SPK
18 x 16 x 4	AH18164*	N/A**	AH18164C*	N/A	N/A	BP1816***	N/A
18 x 16 x 10	AH181610	AH181610HW	AH181610C	AHF181610	AHF181610C	BP1816***	AH1816SPK
20 x 16 x 8	AH20168	N/A**	AH20168C	AHF20168	AHF20168C	BP2016***	AH2016SPK
24 x 24 x 10	N/A	N/A**	N/A	AH242410*	AH242410C*	BP2424***	AH2424SPK

\*Feature mounting feet or flange molded into the box rather than installed separately.

\*\*For part numbers not shown with HW options, add suffix "HW" to remove latches (4 screws provided) and consult factory for availability.

\*\*\*Add suffix for material desired: AL = aluminum, CS = carbon steel, ABS = ABS material

# HEARTLAND® SERIES



## ENCLOSURES AND PANELS

### HEARTLAND ENCLOSURE WITH STAINLESS STEEL LATCHES



### BACK PANEL, FLANGE, AND SWING PANEL KITS



 				
Enclosure Size	Opaque Cover w/ Mounting Feet Part #	Clear Cover w/ Mounting Feet Part #	Back Panel Part #	Swing Panel Kit Part #
6 x 6 x 4	AH664SS*	AH664CSS*	BP66**	AH66SPK
8 x 6 x 4	AH864SS*	AH864CSS*	BP86**	AH86SPK
8 x 8 x 4	AH884SS*	AH884CSS*	BP88**	AH88SPK
10 x 8 x 4	AH1084SS*	AH1084CSS*	BP108**	AH108SPK
10 x 8 x 6	AH1086SS*	AH1086CSS*	BP108**	AH108SPK
10 x 10 x 6	AH10106SS*	AH10106CSS*	BP1010**	AH1010SPK
12 x 10 x 6	AH12106SS*	AH12106CSS*	BP1210**	AH1210SPK
14 x 12 x 6	AH14126SS*	AH14126CSS*	BP1412**	AH1412SPK
16 x 14 x 8	AH16148SS*	AH16148CSS*	BP1614**	AH1614SPK
18 x 16 x 4	AH18164SS*	AH18164CSS*	BP1816**	N/A
18 x 16 x 10	AH181610SS*	AH181619CSS*	BP1816**	AH1816SPK
20 x 16 x 8	AH20168SS*	AH20168CSS*	BP2016**	AH2016SPK
24 x 24 x 10	AH242410SS*	AH242410CSS*	BP2424**	AH2424SPK

\*To order with a flange, change "AH" prefix to "AHF".

\*\*Add suffix for material desired: AL = aluminum, CS = carbon steel, ABS = ABS material  
Stainless steel latch products are available as standard with mounting feet included.

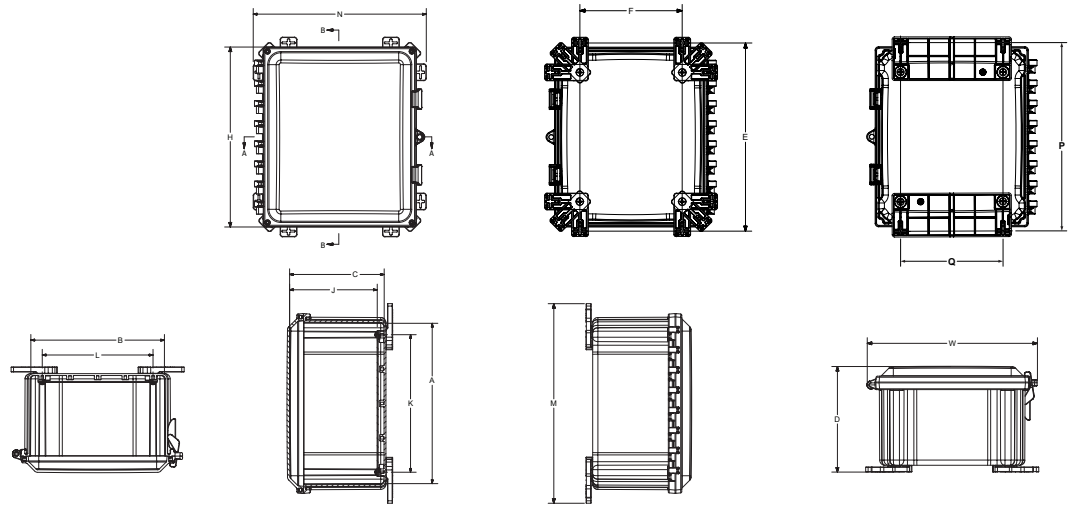
# HEARTLAND® SERIES DIMENSIONS

## Screw Size and Torque Table

Product Sizes	Back Panel Screw Size	Back Panel Recommended Torque	Cover Screw Size	Cover Screw Size Recommended Torque	Mounting Foot Screw Size	Mounting Foot Screw Size Recommended Torque	Recommended Mounting Flange Torque
All	#10-32 x 3/8	16-20 in-lbs	#10-32 x 5/8	20-24 in-lbs	1/4-20 x 1/2	10-14 in-lbs	25-30 in-lbs

### NOTES:

- + Catalog drawing is for reference only
- + See actual part drawing for specific design
- + Different sizes may have 1, 2, 4, or 6 latches
- + J dimension is with back panel installed
- + Back panel is sold separately



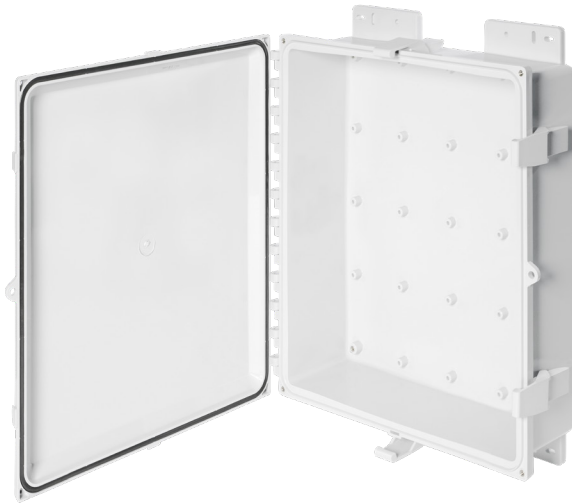
## Enclosure Dimensions Table

Size ID Number	Overall H x W x D	Inside A x B x C	Mounting Feet Hor. E x F	Mounting Feet Ver. E x F	Mounting Feet 45° E x F	Flange P x Q	J	K	L	M	N
AH664, AH664C	7.41 x 8.68 x 5.84 (188 x 223 x 148)	5.94 x 5.94 x 5.02 (151 x 151 x 127)	3.64 x 8.40 (93 x 213)	8.03 x 3.64 (204 x 93)	6.75 x 6.74 (171 x 171)	8.03 x 3.64 (204 x 93)	4.50 (114)	4.25 (108)	4.25 (108)	8.89 (226)	8.89 (226)
AH864, AH864C	9.41 x 8.68 x 5.86 (239 x 223 x 149)	7.97 x 5.97 x 5.07 (202 x 152 x 129)	5.64 x 8.04 (143 x 213)	10.03 x 3.64 (255 x 93)	8.76 x 6.75 (223 x 171)	10.03 x 3.64 (255 x 93)	4.56 (116)	6.25 (159)	4.25 (108)	10.89 (277)	8.89 (226)
AH884, AH884C	9.41 x 10.68 x 5.86 (239 x 271 x 149)	7.97 x 7.97 x 5.03 (202 x 202 x 128)	5.63 x 10.03 (143 x 255)	10.04 x 5.63 (255 x 143)	8.74 x 8.78 (222 x 223)	10.04 x 5.63 (255 x 143)	4.53 (115)	6.25 (159)	6.25 (159)	10.88 (277)	10.88 (277)
AH1084, AH1084C	11.41 x 10.68 x 6.36 (290 x 271 x 161)	9.96 x 7.96 x 5.57 (253 x 202 x 142)	7.64 x 10.04 (194 x 255)	12.03 x 5.64 (306 x 143)	10.76 x 8.75 (273 x 222)	12.03 x 5.64 (306 x 143)	5.05 (128)	8.25 (210)	6.25 (159)	12.89 (327)	10.89 (277)
AH1086, AH1086C	11.41 x 10.68 x 7.89 (209 x 271 x 200)	9.95 x 7.95 x 7.06 (253 x 202 x 179)	7.63 x 10.03 (194 x 255)	12.04 x 5.63 (306 x 143)	10.76 x 8.75 (273 x 222)	12.04 x 5.63 (306 x 143)	6.54 (166)	8.25 (210)	6.25 (159)	12.88 (327)	10.88 (277)
AH10106, AH10106C	11.41 x 12.68 x 6.97 (209 x 322 x 177)	9.95 x 9.95 x 6.15 (253 x 253 x 156)	7.62 x 12.03 (194 x 306)	12.04 x 7.63 (306 x 194)	10.76 x 10.75 (273 x 273)	12.04 x 7.63 (306 x 194)	5.65 (144)	8.25 (210)	8.25 (210)	12.88 (327)	12.88 (327)
AH12106, AH12106C	13.40 x 12.68 x 7.86 (340 x 322 x 200)	11.95 x 9.95 x 7.07 (304 x 253 x 180)	9.64 x 12.04 (245 x 306)	14.03 x 7.64 (357 x 194)	12.76 x 10.75 (324 x 273)	14.03 x 7.64 (357 x 194)	6.56 (167)	10.25 (260)	8.25 (210)	14.89 (378)	12.89 (327)
AH14126, AH14126C	15.40 x 14.68 x 7.86 (391 x 373 x 200)	13.95 x 11.95 x 7.07 (354 x 304 x 180)	11.64 x 14.04 (296 x 357)	16.03 x 9.64 (407 x 245)	14.76 x 12.75 (375 x 324)	16.03 x 9.64 (407 x 245)	6.56 (167)	12.25 (311)	10.25 (260)	16.89 (429)	14.89 (378)
AH16148, AH16148C	17.65 x 16.68 x 9.98 (448 x 424 x 253)	15.93 x 13.93 x 9.20 (405 x 354 x 234)	13.64 x 16.04 (347 x 407)	18.03 x 11.64 (458 x 296)	16.76 x 14.75 (426 x 375)	18.03 x 11.64 (458 x 296)	8.68 (220)	14.25 (362)	12.25 (311)	18.89 (480)	16.89 (429)
AH181610, AH181610C	19.41 x 18.68 x 11.90 (493 x 474 x 302)	17.83 x 15.83 x 11.08 (453 x 402 x 281)	15.64 x 18.04 (397 x 458)	20.03 x 13.64 (509 x 347)	18.75 x 16.74 (476 x 425)	20.03 x 13.64 (509 x 347)	10.56 (268)	16.25 (413)	14.25 (362)	20.89 (531)	18.89 (480)
AH18164, AH18164C	19.41 x 18.68 x 5.41 (493 x 474 x 137)	18.16 x 16.16 x 5.08 (461 x 410 x 129)	n/a	20.50 x 13.50 (521 x 343)	n/a	n/a	4.56 (116)	16.25 (413)	14.25 (362)	21.75 (552)	n/a
AH20168, AH20168C	21.41 x 18.68 x 9.97 (544 x 474 x 253)	19.86 x 15.86 x 9.15 (504 x 403 x 232)	18.75 x 19.17 (476 x 487)	22.05 x 14.75 (560 x 375)	21.91 x 17.87 (557 x 454)	22.05 x 14.75 (560 x 375)	8.65 (220)	18.25 (464)	14.25 (362)	24.00 (610)	20.02 (509)
AH242410, AH242410C	25.41 x 26.68 x 11.41 (645 x 678 x 290)	23.91 x 23.91 x 11.88 (607 x 607 x 302)	n/a	n/a	n/a	25.69 x 18.00	10.56 (268)	22.25 (565)	22.25 (565)	26.69 (678)	21.86 (555)

All measurements are in inches; items in parentheses are in millimeters.

# HEARTLAND® SL™ SERIES

## Low-Profile Enclosures



Back panels available in ABS material to optimize wireless signal transmission



Optional ABS back panel



### OPTIMIZED DEPTH

#### Feature

- + Shallow depth design with industry standard height/width eliminates unneeded depth and is ideal for low-profile applications

#### Benefit

- + Saves space in installation and reduces material cost

### ROBUST, SMOOTH SIDE WALLS

#### Feature

- + Increased fitting mounting space and an aesthetically pleasing appearance

#### Benefit

- + Long, dependable product life
- + Increases the quantity of fittings which can be installed

### FLEXIBILITY

#### Feature

- + Built-in DIN rail mounting embosses in the back of the enclosure offer an alternative to rack panel mounting
- + Molded-in mounting feet with added mounting cross
- + Available in opaque or clear covers to suit customer application

#### Benefit

- + DIN rail embosses save time and back panel cost
- + Reduces need for costly on-site modification or adjustments


### AESTHETICS

#### Feature

- + Low-profile design meets customer aesthetic requirements when mounting in visible areas on or inside buildings

#### Benefit

- + Improved appearance provides a clean look for brand promotion

						
Enclosure Size	Opaque Cover Catalog #	Opaque Cover - No Latches Catalog #	Clear Cover Catalog #	Opaque Cover w/ Stainless Steel Latches Catalog #	Clear Cover with Stainless Steel Latches Catalog #	Back Panel Part #
10 x 8 x 3	AH1083	AH1083HW	AH1083C	AH1083SS	AH1083CSS	BP108**
12 x 10 x 4	AH12104	AH12104HW	AH12104C	AH12104SS	AH12104CSS	BP1210**
14 x 12 x 4	AH14124	N/A*	AH14124C	AH14124SS	AH14124CSS	BP1412**
16 x 14 x 4	AH16144	N/A*	AH16144C	AH16144SS	AH16144CSS	BP1614**
18 x 16 x 4	AH18164	N/A*	AH18164C	AH18164SS	AH18164CSS	BP1816**
20 x 16 x 4	AH20164	N/A*	AH20164C	AH20164SS	AH20164CSS	BPJ2016**
24 x 24 x 6	AH24246	N/A*	AH24246C	AH24246SS	AH24246CSS	BP2424PC**

\*For part numbers not shown with HW options, add suffix "HW" to remove latches (4 screws provided) and consult factory for availability

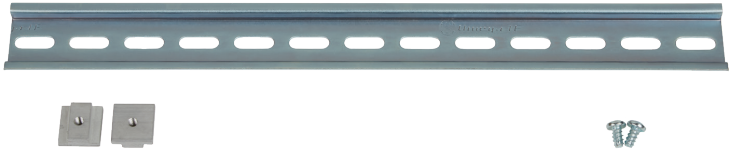
\*\*Add suffix for material desired: AL = aluminum, CS = carbon steel, ABS = ABS material

# HEARTLAND® SERIES

## ACCESSORIES

### DRK DIN RAIL KITS

DRK DIN Rail Kits	
Catalog #	Fits
AH6DRK	6"
AH8DRK	8"
AH10DRK	10"
AH12DRK	12"
AH14DRK	14"
AH16DRK	16"
AH18DRK	18"
AH20DRK	20"
AH24DRK	24"



### 14" DRK DIN RAIL KIT

DRK part numbers include DIN rail that fits size indicated, plus two custom slot nuts and two screws for mounting to enclosure.

### DR DIN RAIL

DR DIN Rail	
Catalog #	Fits
AH6DR	6"
AH8DR	8"
AH10DR	10"
AH12DR	12"
AH14DR	14"
AH16DR	16"
AH18DR	18"
AH20DR	20"
AH24DR	24"



### 14" DR DIN RAIL

DR part numbers include DIN rail that fits size indicated, plus two trilobular screws for mounting to back of enclosure.

# HEARTLAND® SERIES INTERIOR MOUNTING SOLUTIONS

## WEIGHT DISTRIBUTION SHELVES

### APPLICATIONS

- + This innovative weight distribution shelf provides an extremely rugged support system when adding heavy equipment in polycarbonate enclosures.
- + Ideal for support when adding a power supply, battery, or heavy equipment.

### BENEFITS

- + Improves installation quality by reducing potential for bottom wall deflection.
- + Reduces risk of enclosure and equipment maintenance and replacement costs due to damage from added weight.

### INNOVATIVE FEATURES

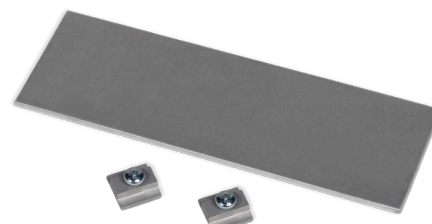
- + Aluminum shelf supported by enclosure side walls reduces risk of deflection of the enclosure bottom wall when subjected to increased weight load.
- + Available in 7 SKUs designed for use with our polycarbonate enclosure sizes from 10" x 10" to 24" x 24".
- + Constructed from strong, lightweight, corrosion resistant aluminum.
- + Available as standalone SKUs or included with our polycarbonate enclosures.\*
- + Custom shelf modifications, such as wire pass-through holes or mounting points for battery straps, are available upon request.
- + Provides sufficient space for mounting a back panel in addition to the shelf.
- + Fastening hardware included.

*\*When ordered included with the enclosure, shelves are shipped unassembled and included in the enclosure carton.*

#### Individual Weight Distribution Shelves for Polycarbonate Enclosures

Catalog #	Shelf Width	Shelf Depth	Fits Enclosure Type
WD105	10"	5"	AH10106
WD106	10"	6"	AH12106
WD12	12"	6"	AH14126
WD14	14"	8"	AH16148
WD1610	16"	10"	AH181610
WD168	16"	8"	AH20168
WD24	24"	10"	AH242410

*Fastening hardware included*



#### Polycarbonate Enclosure with Weight Distribution Shelf Included in Carton

Catalog #	Polycarbonate Enclosure Dimensions	Shelf Included
AHWH1010	10" x 10" x 6"	WD105
AHWD1210	12" x 10" x 6"	WD106
AHWD1412	14" x 12" x 6"	WD12
AHWD1614	16" x 14" x 8"	WD14
AHWD1816	18" x 16" x 10"	WD1610
AHWD2016	20" x 16" x 8"	WD168
AHWD2424	24" x 24" x 10"	WD24

*\*Add "CC" to end of catalog # for polycarbonate enclosure with clear cover*



# HEARTLAND® SERIES

# INTERIOR MOUNTING SOLUTIONS

## SIDE PANEL KITS

### APPLICATIONS

- + Aluminum side panels allow for mounting of components on enclosure walls, increase mounting space and flexibility, and reduce the need to increase the enclosure size to accommodate additional components—enabling customers to use smaller enclosures in applications requiring tight spacing.

### BENEFITS

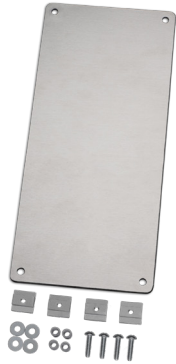
- + Increases customer installation flexibility—equipment can be mounted on multiple sides of the enclosure, in addition to the traditional enclosure back wall.
- + Lowers cost by reducing the need to increase the enclosure size when more mounting space is required.
- + Reduces engineering labor (maintains enclosure mounting footprint).

### INNOVATIVE FEATURES

- + Available in 9 SKUs designed for use with our polycarbonate enclosure sizes 6" x 6" to 24" x 24".
- + Corrosion resistant slot nut fastening hardware kit included.
- + Simple and easy installation with the use of common tools—simply install, position, and secure the side panel using the provided slot nuts which fit perfectly in the innovative enclosure T-Slots.
- + Custom shelf modifications, such as wire pass-through holes or mounting points for battery straps, are available upon request.
- + Provides sufficient space for mounting a back panel in addition to the shelf.

Individual Side Panel Kits for Polycarbonate Enclosures			
Catalog #	Side Panel Size	Fits (Enclosure Long Side)	Fits (Enclosure Short Side)
SP6	6"	AH664	AH864
SP8	8"	AH884	AH884, AH1084
SP10	10"	AH1086, AH10106	AH10106
SP12	12"	AH12106	AH14126
SP14	14"	AH14126	AH16148
SP16	16"	AH16148	AH181610, AH20168
SP18	18"	AH181610	N/A
SP20	20"	AH20168	N/A
SP24	24"	AH242410	N/A

Mounting slot nut hardware included in kit.



# HEARTLAND® SERIES ACCESSORIES

## SLOT NUT KIT



## SWING PANEL MOUNTS



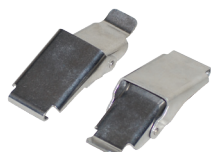
## POLYCARBONATE REPLACEMENT LATCH KIT



## ACCESSORY KIT



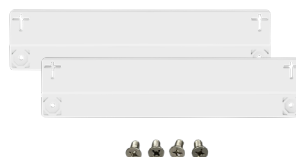
## STAINLESS STEEL REPLACEMENT LATCH KIT



## POLYCARBONATE VENT



## MOUNTING FLANGE KIT



## PLUGGIT!



### Heartland Series Accessories

Catalog #	Description	Pieces Included
AHSNK	Slot Nut Kit	Two nuts & two screws
AHSPMK	Swing Panel Mounts	Four per kit
AHLK	Polycarbonate Replacement Latch Kit	Two non-metallic latches per kit
AHAK	Accessory Kit – replacement only	Four mounting feet, cover screws, mounting caps, back panel screws, & washers
AHLKSS	Stainless Steel Replacement Latch Kit	Two stainless steel latches per kit
REAH-V60	Small Vent (60mm) UL Listed 3R	Mounting nut
REAH-V80	Small Vent (80mm)	Mounting nut
MFK6 MFK8 MFK10 MFK12 MFK14 MFK16	Mounting Flange Kit for Polycarbonate Enclosures (6"-16" wide)	Two polycarbonate mounting flanges, four countersunk screws
REHPERIES1	Pluggit! Kit – Fits Cutouts for ½", 5/8", ¾" Dia. Hole	Hole plug, gaskets, spacer sleeve
REHPERIES1.5	Pluggit! Kit – Fits Cutouts for ½" Conduit	Hole plug, gaskets, spacer sleeve
REHPERIES2	Pluggit! Kit – Fits Cutouts for ½" Conduit, 22mm Push Button, ¾" Conduit, 30mm Push Button	Hole plug, gaskets, spacer sleeve
REHPERIES3	Pluggit! Kit – Fits Cutouts for 1", 1 ¼" Conduit	Hole plug, gaskets, spacer sleeve
REHPERIES4	Pluggit! Kit – Fits Cutouts for 1 ½", 2" Conduit	Hole plug, gaskets, spacer sleeve
REHPERIES5	Pluggit! Kit – Fits Cutouts for 2 ½" Conduit	Hole plug, gaskets, spacer sleeve
REHPERIES6	Pluggit! Kit – Fits Cutouts for 3" Conduit	Hole plug, gaskets, spacer sleeve
REHPERIES7	Pluggit! Kit – Fits Cutouts for 3 ½" Conduit	Hole plug, gaskets, spacer sleeve
REHPERIES8	Pluggit! Kit – Fits Cutouts for 4" Conduit	Hole plug, gaskets, spacer sleeve

# SOLARSHIELD™ HMI COVER

## HOW IT WORKS



1. Closed **opaque** cover protects HMI screen from damaging UV rays.



2. Twist latch(es) counterclockwise and lift top hinged cover.



3. Open hinged inner doors and rest cover into notches for an easy, hands-free viewing experience.



1. Closed **clear** cover allows excellent visibility of HMI screen.



2. Twist latch(es) counterclockwise and lift top hinged cover for easy access to HMI screen.

## APPLICATIONS

- + Extremely tough and durable, **patented** SolarShield HMI Covers are used in both outdoor and indoor applications.
- + Opaque configuration provides superior protection of Human Machine Interface (HMI) screens from the sun. Both Opaque and Clear configurations provide protection from wind-blown dust, water, oils, chemicals, grease, and other environmental conditions.

## BENEFITS

- + **Superior Protection:** SolarShield HMI covers protect HMI screens and electrical equipment from corrosion and damage due to UV\*, water, oils, dirt, and sand and greatly reduce equipment replacement cost.
- + **Simplicity and Functionality:** Easy to use, hinged design includes supporting inner doors\* for hands-free use and better visibility of the HMI screens in the sun.
- + **Strength and Durability:** Impact resistant polycarbonate construction provides long dependable life in harsh conditions.

## INNOVATIVE FEATURES

- + Patented design with non-metallic, hinged inner doors\* to shield screen from the sun and allow for hands-free use
- + Clear Cover configuration has no inner doors, allowing for excellent visibility of the HMI screen while cover is closed
- + Broad, expanded size selection features options for most standard size HMI screens with dimensions up to 20"W x 14"H
- + NEMA 4/4X
- + Universal covers can be used with either non-metallic or metallic enclosures
- + Lightweight, high-impact rated, UV resistant
- + polycarbonate material construction
- + Stainless steel hardware kit included
- + Padlock-able for increased security
- + Simple and easy installation with the use of common tools
- + Installation instructions and drill template provided
- + Color: Pantone 428C

\*Opaque configuration only – select Opaque if UV protection is required. Clear configuration offers protection from environmental conditions and debris while allowing for continual visibility of the screen; no additional UV protection.



# SOLARSHIELD™

## HMI COVER

### MATERIALS

- + **Cover, Base, and Inner Doors:** Polycarbonate with UV inhibitors
- + **Gasket:** Robotically applied foam-in-place seamless polyurethane
- + **Hardware:** Stainless Steel
- + **Twist Latch:** Polyamide

### RATINGS AND LISTINGS

- +  per file #E540056: 20" x 14", 16" x 11"
- +  per file #E64358: 10" x 8"
- + UL 508 A
- + NEMA Type 4/4X
- + Operating Temperature Rating:  
-40°F to +248°F (-40°C to +120°C)
- + Outdoor UV Exposure (UL 746C) (f1) Rated — UL's best rating; resin has passed test for UV exposure and water immersion

*\*Maintains NEMA Type 4/4X rating on a Type 4/4X enclosure when a Type 4X HMI Device is installed.*

### ORDERING INFORMATION

SolarShield™ HMI Cover Catalog Info			
Catalog Number	Description	Overall H x W x D	Inside H x W x D (Screen Clearance)
HMICVR1008	Opaque HMI Cover	11.41 x 13.13 x 2.50	7.25 x 9.88 x 2.25
HMICVR1008C	Clear HMI Cover	11.41 x 13.13 x 2.50	7.25 x 9.88 x 2.25
HMICVR1611	Opaque HMI Cover	15.72 x 19.10 x 2.59	11.25 x 15.88 x 2.21
HMICVR1611C	Clear HMI Cover	15.72 x 19.10 x 2.59	11.25 x 15.88 x 2.21
HMICVR2014	Opaque HMI Cover	17.98 x 23.07 x 2.59	14.25 x 19.88 x 2.21
HMICVR2014C	Clear HMI Cover	17.98 x 23.07 x 2.59	14.25 x 19.88 x 2.21

SolarShield™ HMI Cover Compatibility		
	Smallest Compatible Enclosure Size	
HMI Cover	Heartland®	Heartland SL™
HMICVR1008	AH14126	AH14124
HMICVR1008C	AH14126	AH14124
HMICVR1611	AH242410	AH24246
HMICVR1611C	AH242410	AH24246
HMICVR2014	AH242410	AH24246
HMICVR2014C	AH242410	AH24246

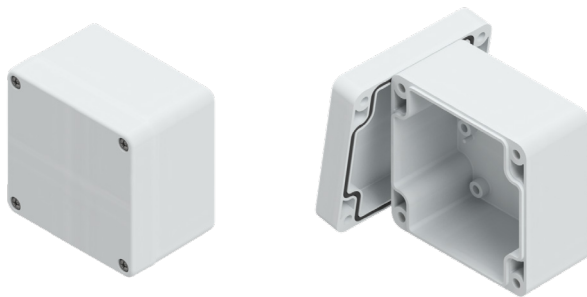
# OTHER POLYCARBONATE ENCLOSURES

## **BANTAMBOX SERIES**

**SLIM, RUGGED, POLYCARBONATE ENCLOSURES WITH SCREW DOWN LIFT-OFF COVERS FOR INDOOR AND OUTDOOR USE**

Available in 38 configurations with opaque and clear screw cover options, the BantamBox series of enclosures provides industry-leading protection in smaller applications.

*See the BantamBox Series brochure for more details.*



## **COMMANDER SERIES**

**PROVEN PROTECTION FROM A COMPLETE ENVIRONMENTAL SEAL**

The Commander Series offers an all-polycarbonate product with blank covers and a choice of one-or-two-hole pushbutton openings for both 22mm and 30mm hardware. These enclosures feature flush external walls, unobstructed internal walls, polymer cover screws, and a watertight polyurethane seal. They are exceptional for compact or portable control applications, or simply for use as small junction boxes.

*See the Commander Series brochure for more details.*



**BLANK**



**ONE HOLE**



**TWO HOLE**



**SAFETY YELLOW  
(ONE OR TWO HOLES)**

