

# POLYCARBONATE ENCLOSURES

 **AttaBox**  
A ROBROY Brand



**MADE IN THE  
U.S.A.\***

ENCLOSURES, ACCESSORIES,  
& CUSTOM SOLUTIONS

[attabox.com](http://attabox.com)

# OUR MISSION

For decades, AttaBox has set the standard in the electrical products industry by designing and manufacturing high-performance polycarbonate enclosures built to withstand the toughest indoor and outdoor environments. Whether you're protecting sensitive instrumentation or valuable electrical components, AttaBox enclosures deliver proven durability, reliability, and compliance with leading industry standards like NEMA, UL/CSA, and IEC.

With hundreds of part numbers and a wide range of configurations, our enclosures are engineered to combine sleek design with rugged performance. Every product is crafted through our fully integrated, in-house manufacturing process—ensuring hands-on quality control from start to finish.

We offer a large inventory of standard enclosures, panels, and accessories ready to ship when you need them. And when off-the-shelf isn't enough, our team is here to collaborate on innovative, custom solutions tailored to your specific project needs. AttaBox enclosures are the trusted choice across industries where protection matters most. Let us help you safeguard your systems—with smart designs, reliable delivery, and unmatched support.



## SelectRight

AttaBox's broad selection of in-stock, off-the-shelf non-metallic enclosures and accessories are available to fulfill your immediate application needs, meet specification, reduce lead times, and optimize initial costs.



## ModRight

ModRight is your go-to solution for tackling even the most unique and complex enclosure needs. With state-of-the-art technology and a proven process, we ensure that every modification is delivered on time and meets the highest quality standards in the industry. Plus, modifications can be mixed and matched in endless combinations, giving you the freedom to create exactly what you need.



## DeliverRight

AttaBox's U.S.-based manufacturing and customer-first service offer a trusted partnership approach to getting you the products you need, ready to use when and where you need them. Value-add delivery options are available to improve your productivity, including direct shipment, bulk packaging, kitting, and custom labeling.



- + Custom Holes
- + Custom Cutouts
- + Custom Windows
- + Silk Screening
- + Digital Printing

- + Custom Mold-In Colors
- + EMI/RFI Shielding
- + Custom Back Panels
- + Other Special Requests



**ELECTRICAL  
EQUIPMENT  
MANUFACTURING**



**WIRELESS  
NETWORKING**



**OIL & GAS**

**"The quality of the Heartland series enclosure was visibly better than others we had considered."**

Gary Keating,  
Manager,  
Redline Instruments



**COMMUNICATIONS  
& TELECOM**



**CONTROL  
PANELS**

**"AttaBox has been a real winner for us... you can feel the difference in strength and protection."**

Scott Izzo,  
Vice President,  
Controls, Inc.



**AGRICULTURE,  
FARMING,  
& IRRIGATION**



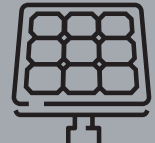
**REMOTE  
MONITORING**

**"We found [AttaBox] enclosures to be high quality, with proven performance and competitive prices."**

Andrew Garcia,  
Outside Sales Engineer,  
Branom Instrument Co.



**LIGHTING  
CONTROL**



**SOLAR**



**CAR WASH**



**WATER &  
WASTEWATER**

**"Heartland is strong and durable. That's key; our products go into very demanding environments."**

Bill Flemming,  
Controls & Automation,  
Gulf Coast Pump  
& Equipment



**MARINE**



**MINING**



**FOOD &  
BEVERAGE**



**UTILITIES**

**"We have had no problems. These are robust, high-quality, maximum-protection enclosures."**

Peter Vuicic,  
Owner,  
CanMeter

# HEARTLAND® SERIES

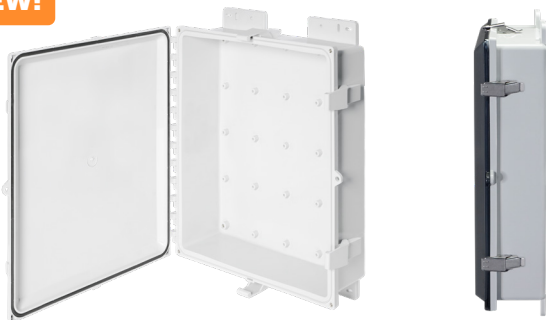


**The most durable, reliable NEMA 4X non-metallic polycarbonate enclosures available! Heartland polycarbonate enclosures can withstand rain, sleet, snow, splashing water, hose-directed water, and provide superior impact and flame protection. And with an ever-growing list of innovations, including unique interior mounting options and available exterior mounting flange, Heartland is built to endure.**

- + Size range: 6" x 6" to 24" x 24"
- + Material: polycarbonate with UV inhibitors
- + Opaque and clear cover options
- + Full non-metallic hinge does not penetrate enclosure
- + Full non-metallic or stainless steel latch options; NEW HW screw-down configuration available with no latches
- + Easy-to-remove door with integrated locking clasp
- + Thick, robust sidewall and base construction prevents flexing
- + T-Channel and Slot Nut design allows for infinite adjustment of panels
- + Robotically-applied foam-in-place gaskets create tight seal when cover is closed
- + Built-in DIN rail mounting embosses
- + Multi-directional mounting feet included; NEW mounting flange option available separately
- + NEMA 10250, UL 50, UL 50e, UL 508A
- + cULus Listed / CSA Std. C22.2
- + Type 1, 3R, 4, 4X, 6P, 12, as designated
- + IEC Ingress Rating: IP66, IP68, IPX8, as designated
- + Flammability Rating: UL 94-5VA
- + Outdoor Exposure UL 746C: (f1) Rated

# HEARTLAND® SL™ SERIES

**NEW!**



**Ideal for non-hazardous industrial and commercial applications where space is a premium, these low-profile polycarbonate enclosures optimize equipment installation and protection. Available in slim depths of 3"-6", Heartland SL offers all the mounting space, strength, and durability of the Heartland series without the added depth!**

- + Size range: 10" x 8" x 3" to 24" x 24" x 6"
- + Material: polycarbonate with UV inhibitors
- + Opaque and clear cover options
- + Full non-metallic hinge does not penetrate enclosure
- + Full non-metallic or stainless steel latch options; NEW HW screw-down configuration available with no latches
- + Easy-to-remove door with integrated locking clasp
- + Thick, robust sidewall and base construction prevents flexing
- + Built-in DIN rail mounting embosses
- + Robotically-applied foam-in-place gaskets create tight seal when cover is closed
- + Integrally-molded mounting feet with flexible mounting holes and added "mounting cross" to position screw in desired location
- + NEMA 10250, UL 50, UL 50e, UL 508A
- + cULus Listed / CSA Std. C22.2
- + Type 1, 3R, 4, 4X, 6P, 12
- + IEC Ingress Rating: IP66, IP68, as designated
- + Flammability Rating: UL 94-5VA
- + Outdoor Exposure UL 746C: (f1) Rated

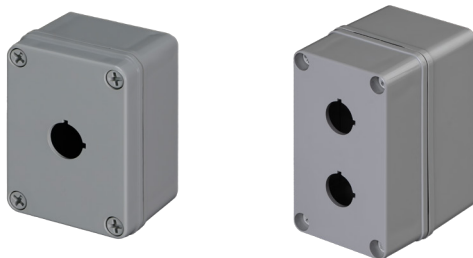
# BANTAMBOX® SERIES



**The BantamBox Series is a sought-after OEM design product thanks to its clean look, flush-fitting cover, and unyielding polycarbonate construction. Offering proven, space-conscious protection of small electronic controls in any environment, these enclosures feature raised bosses that can accommodate back panel mounting for equipment such as remote sensors.**

- + Size range: 3" x 2" to 10" x 6"
- + Material: polycarbonate
- + Opaque and clear screw-down cover options with stainless steel cover screws
- + Multiple depths available in most sizes
- + Molded-in bosses for a variety of mounting solutions
- + NEMA 10250, UL 50, UL 50e, UL 508A
- + cULus Listed / CSA Std. C22.2
- + Type 1, 3R, 4, 4X, 12, as designated
- + IEC Ingress Rating: IP66
- + Flammability Rating: UL 94-V2
- + Outdoor Exposure UL 746C: (f1) Rated

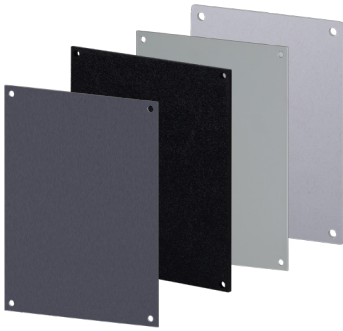
# COMMANDER® SERIES



**Designed for use in compact or portable control systems, or for use as an operator interface in indoor and outdoor environments, the Commander Series is where slim design meets application flexibility. These versatile enclosures come with blank covers or a choice of one or two 22mm or 30mm pushbutton openings.**

- + Sizes: 4" x 3" x 2" and 5" x 3" x 3"
- + Material: polycarbonate with UV inhibitors
- + Opaque flush cover with captive stainless steel cover screws
- + Also available in "safety yellow" high-visibility cover option
- + Unobstructed side walls for ease of conduit or component placement
- + NEMA 10250, UL 50, UL 50e, UL 508A
- + cULus Listed / CSA Std. C22.2
- + Type 1, 3R, 4, 4X, 6P, 12, as designated
- + IEC Ingress Rating: IP66, IP67, IP68, as designated
- + Flammability Rating: UL 94-5VA
- + Outdoor Exposure UL 746C: (f1) Rated

# PANELS



**AttaBox offers a wide range of mounting panel options for most product lines in standard industry sizes and multiple material types. Or, utilize the ModRight program to make custom panels to fit your exact needs!**

## + Panel Material Options:

- + Carbon Steel
- + Aluminum
- + Stainless Steel
- + Fiberglass
- + ABS

## + Panel Types:

- + Standard Back Panels
- + Dead Front Panels
- + Variable Dead Front Panels
- + Swing Panels

# ACCESSORIES



**AttaBox's accessories are built to enhance your enclosure while maintaining the original enclosure ratings once installed. Whether purchased with the enclosure or ordered later as a separately priced item, these accessories make completing your installation a breeze!**

- + Breather Vents – cULus/CSA 4X
- + Drain Vents – cULus/CSA 4X
- + Polycarbonate Vents
- + PVC Drain & Vents
- + Louver Plate Vents
- + Vapor Capsules
- + Condensation Plugs
- + PluggIt!® Hole Plugs – cULus/CSA 6P
- + PVC-Coated Hubs
- + Nylon Cord Grips/Cable

## Glands

- + DIN Rail Kits
- + Latch Alternatives
- + Stainless Steel Hardware
- + Heartland® Weight Distribution Shelf
- + Heartland® Side Panel
- + Mounting Feet Kits
- + Mounting Flange Kits
- + Pole Mount Kits
- + Carrying Handles
- + Print Pockets



# SOLARSHIELD™ HMI COVERS

**NEW!**



**Open up your eyes: the most innovative and durable non-metallic HMI cover for use with all enclosure material types is available in patented opaque and clear configurations, in an expanded range of sizes to accommodate HMI screens with dimensions up to 20" x 14". The opaque cover's easy to use hinged design includes supporting inner doors for hands-free visibility of HMI screens in the sun, while the clear cover has no inner doors to allow excellent visibility of HMI screens while it is closed.**

- + Sizes: 10" x 8", 16" x 11", and 20" x 14"
- + Material: Cover, base, and inner doors – polycarbonate with UV inhibitors
- + Opaque configuration provides superior protection of Human Machine Interface (HMI) screens from the sun.
- + Both Opaque and Clear configurations provide protection from wind-blown dust, water, oils, chemicals, grease, and other environmental conditions.
- + These universal covers can be used with either non-metallic or metallic enclosures
- + Lightweight, high-impact rated construction
- + Stainless steel hardware kit included
- + Padlock-able for increased security
- + Simple and easy installation with the use of common tools
- + Installation instructions and drill template provided
- + UL 508A
- + cULus Listed / CSA Std. C22.2 – 20" x 14", 16" x 11"
- + cURus Listed – 10" x 8"
- + NEMA Type 4/4X
- + Flammability Rating: UL 94-5VA
- + Outdoor Exposure UL 746C: (f1) Rated

## SOLUTIONS TEAM



**Need a custom enclosure design? Got an unusual kitting request? Not sure where to start? Let our dedicated Solutions Team be your guide to all things AttaBox!**

**Our knowledgeable Solutions Team is made up of members of our Sales/Business Development, Application Engineering, Operational Support, and Product Management departments, each assigned to assist in product selection, value-add design, optimized delivery, and service. No matter what custom solution you require, you'll be supported every step of the way!**

### Utilize the Solutions Team to:

- + Cut enclosure selection time by over 50%
- + Reduce time spent on problem-solving and product discovery
- + Save engineering and assembly labor
- + Optimize enclosure and accessory design
- + Create fully-custom enclosures, including larger sizes
- + Reduce freight requirements
- + Improve material handling
- + Add value with intentional planning and design

**Reach out to your local manufacturer's rep or email [csr@robroyenclosures.com](mailto:csr@robroyenclosures.com) today to get started!**





**500 Maple Street, Belding, MI 48809**

**(616) 794-0700**

**csr@robroyenclosures.com**

**attabox.com**

© 2025 AttaBox Enclosures, A Robroy Brand. All Rights Reserved.  
Version 1, revised 6/23/2025

\*All product families manufactured in the U.S.A. except for BantamBox.