

NEW!

Polycarbonate Enclosure Interior Mounting Solutions

THE ULTIMATE IN FLEXIBILITY AND STRENGTH FOR
INSTALLING EQUIPMENT IN POLYCARBONATE ENCLOSURES.

New, innovative mounting and support solutions are designed for OEMs and Installers and are used with our polycarbonate enclosures to add installation flexibility, increase mounting space and provide solutions for customer installation of heavy components in non-metallic enclosures.

MARKETS AND INDUSTRIES:

- Ideal for Non-Hazardous Industrial and Commercial OEM market segments
- Industries such as O&G, Electrical Control, Water Wastewater, Manufacturing, Communications, Wireless & Remote Monitoring

MATERIALS:

- Aluminum



WEIGHT DISTRIBUTION SHELF

APPLICATIONS:

- This innovative weight distribution shelf provides an extremely rugged support system when adding heavy equipment in polycarbonate enclosures. Ideal for support when adding a power supply, battery, or heavy equipment.

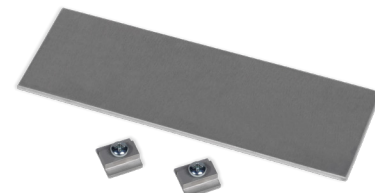
BENEFITS:

- Improves installation quality by reducing potential for bottom wall deflection
- Reduces risk of enclosure and equipment maintenance and replacement costs due to damage from added weight

INNOVATIVE FEATURES:

- Aluminum shelf supported by enclosure side walls reduces risk of deflection of the enclosure bottom wall when subjected to increased weight load
- Available in 7 SKUs designed for use with our polycarbonate enclosure sizes from 10"x10" to 24"x24"
- Constructed from strong, lightweight, corrosion resistant aluminum
- Available as standalone SKUs or included with our polycarbonate enclosures*
- Fastening hardware included

*When ordered included with the enclosure, shelves are shipped unassembled and included in the enclosure carton.



SIDE PANEL KITS

APPLICATIONS:

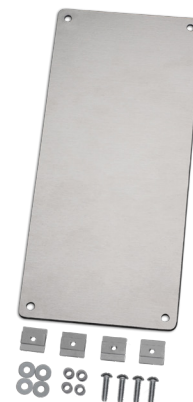
- Aluminum side panels allow for mounting of components on enclosure walls, increase mounting space and flexibility, and reduce the need to increase the enclosure size to accommodate additional components—enabling customers to use smaller enclosures in applications requiring tight spacing

BENEFITS:

- Increases customer installation flexibility—equipment can be mounted on multiple sides of the enclosure, in addition to the traditional enclosure back wall
- Lowers cost by reducing the need to increase the enclosure size when more mounting space is required
- Reduces engineering labor (maintains enclosure mounting footprint)

INNOVATIVE FEATURES:

- Available in 9 SKUs designed for use with our polycarbonate enclosure sizes 6"x6" to 24"x24"
- Corrosion resistant slot nut fastening hardware kit included
- Simple and easy installation with the use of common tools—simply install, position, and secure the side panel using the provided slot nuts which fit perfectly in the innovative enclosure T-Slots.



CATALOG NUMBERS AND DIMENSIONS:



Individual Weight Distribution Shelves for Polycarbonate Enclosures

CATALOG #	SHELF WIDTH	SHELF DEPTH	FITS ENCLOSURE TYPE
WD105	10"	5"	AH10106
WD106	10"	6"	AH12106
WD12	12"	6"	AH14126
WD14	14"	8"	AH16148
WD1610	16"	10"	AH181610
WD168	16"	8"	AH20168
WD24	24"	10"	AH242410

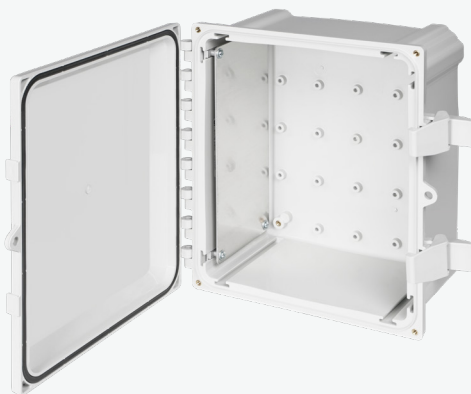
*Fastening hardware included

Polycarbonate Enclosure with Weight Distribution Shelf Included in Carton

CATALOG #	POLYCARBONATE ENCLOSURE DIMENSIONS	SHELF INCLUDED
AHWD1010	10" x 10" x 6"	WD105
AHWD1210	12" x 10" x 6"	WD106
AHWD1412	14" x 12" x 6"	WD12
AHWD1614	16" x 14" x 8"	WD14
AHWD1816	18" x 16" x 10"	WD1610
AHWD2016	20" x 16" x 8"	WD168
AHWD2424	24" x 24" x 10"	WD24

*Add CC to end of Catalog # for polycarbonate enclosure with clear cover

Individual Side Panel Kits for Polycarbonate Enclosures



CATALOG #	SIDE PANEL SIZE	FITS (ENCLOSURE LONG SIDE)	FITS (ENCLOSURE SHORT SIDE)
SP6	6"	AH664	AH864
SP8	8"	AH884	AH884, AH1084
SP10	10"	AH1086, AH10106	AH10106
SP12	12"	AH12106	AH14126
SP14	14"	AH14126	AH16148
SP16	16"	AH16148	AH181610, AH20168
SP18	18"	AH181610	n/a
SP20	20"	AH20168	n/a
SP24	24"	AH242410	n/a

*Mounting slot nut hardware included in kit



500 Maple Street, Belding, MI 48809
E: CSR@robroyenclosures.com P: 616.794.0700