

Enclosures **Heartland Series**

## **Polycarbonate Enclosure 20 x 16 x 8 Inches Heartland with Opaque Cover, Weight Distribution Shelf**



**Catalog Number** AHWD20168

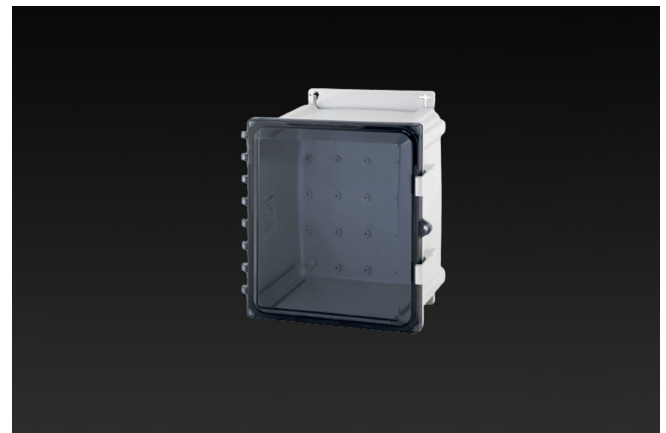
**UPC** 19156411981

List Price

**\$600.14**

### **Description**

20H x 16W x 8D Heartland™ Series Opaque Cover Enclosure with an innovative weight distribution shelf provides an extremely rugged support system when adding heavy equipment in polycarbonate enclosures. Ideal for support when adding a power supply, battery, or heavy equipment which could potentially deflect the enclosure bottom wall.



### **Application**

This innovative weight distribution shelf provides an extremely rugged support system when adding heavy equipment in polycarbonate enclosures.

### **Features**

- Aluminum shelf supported by enclosure side walls reduces risk of deflection of the enclosure bottom wall when subjected to increased weight load
- Available in 7 SKUs designed for use with our polycarbonate enclosure sizes from 10"x10" to 24"x24"
- Constructed from strong, lightweight, corrosion resistant aluminum
- Fastening hardware included

- Flush-fit side mount swing panel and DIN rail system
- Molded in bosses
- Multi-directional mounting feet
- Single SKU with multiple cover attachment options

## General Information

|                                               |                                                |
|-----------------------------------------------|------------------------------------------------|
| <b>Color</b>                                  | Gray                                           |
| <b>Material</b>                               | Polycarbonate                                  |
| <b>Back Panel Screw Size</b>                  | #10-32x3/8                                     |
| <b>Back Panel Recommended Torque</b>          | 16-20 in-lbs.                                  |
| <b>Back Panel Screw Material</b>              | Zinc Plated                                    |
| <b>Cover Screw Size</b>                       | #10-32 x 5/8                                   |
| <b>Cover Screw Recommended Torque</b>         | 20-24 in-lbs.                                  |
| <b>Cover Screw Material</b>                   | 304 SS                                         |
| <b>Mounting Foot Screw Size</b>               | 1/4-20 x 1/2                                   |
| <b>Mounting Foot Screw Recommended Torque</b> | 10-14 in-lbs.                                  |
| <b>Installation Mounting Torque</b>           | 25-30 in-lbs. Max                              |
| <b>Metal Inserts</b>                          | Brass                                          |
| <b>Hinge Material</b>                         | Integral Polycarbonate                         |
| <b>Latch Material</b>                         | Polycarbonate                                  |
| <b>Gasket Material</b>                        | Poured In Place (PIP)<br>Polyurethane Seamless |
| <b>Country of Origin</b>                      | USA                                            |

## Dimensions

|                           |       |
|---------------------------|-------|
| <b>Height (in)</b>        | 20.0  |
| <b>Width (in)</b>         | 16.0  |
| <b>Depth (in)</b>         | 8.0   |
| <b>Height (mm)</b>        | 508.0 |
| <b>Width (mm)</b>         | 406.0 |
| <b>Depth (mm)</b>         | 203.0 |
| <b>Useable Depth (in)</b> | 8.7   |
| <b>Useable Depth (mm)</b> | 220.0 |

## Standards

---

|                                        |                            |
|----------------------------------------|----------------------------|
| <b>NEMA 250; UL 50; UL 50e; UL508A</b> | cULus Listed File #E319779 |
| <b>Type</b>                            | 1; 3R; 4; 4X; 12           |
| <b>IEC 60529</b>                       | IP66                       |
| <b>IEC 60529</b>                       | cULus Listed File #E362920 |
| <b>Temperature Range °F</b>            | -40°F to +248°F            |
| <b>Temperature Range °C</b>            | -40°C to +120°C            |
| <b>Flammability Rating</b>             | UL94-5VA                   |
| <b>Outdoor Exposure UL746c</b>         | (f1) Rated                 |
| <b>CE</b>                              | Certified                  |

Latch Material  
Polycarbonate with UV Inhibitors