

Enclosures **Heartland Series**

## Polycarbonate Enclosure 10 x 10 x 6 Inches Heartland Opaque Cover



**Catalog Number** AH10106

**UPC** 191564103624

List Price

**\$189.85**

### Description

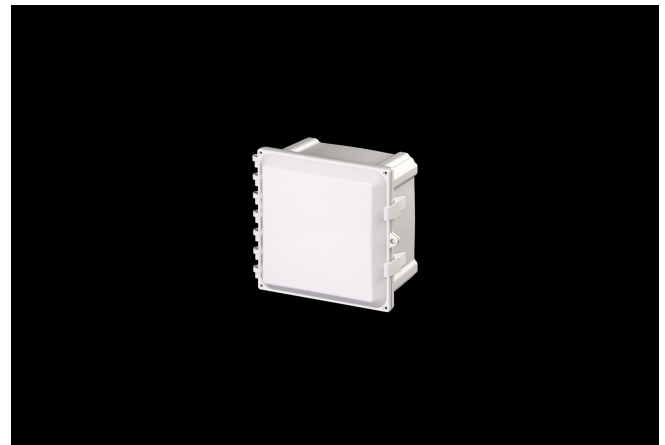
10H x 10W x 6D Inches Heartland (AH) Series is a high performance, polycarbonate enclosure applicable for heavy industrial conditions, but with a refined style suitable for commercial, industrial and OEM design applications. Heartland Series enclosures are rain-tight and watertight rated for use in both interior and exterior applications. This configuration features an opaque cover which is hinged, latched and padlockable.

### Application

- Suitable for heavy industrial; commercial; and OEM applications
- Used to house electrical and electronic controls; instruments; and components
- Used indoors or outdoors
- Used in highly corrosive areas
- Provides protection against rain; sleet; snow; splashing water; hose-directed water; submersion; sun/UV and flame protection.

### Features

- Latches and hinges do not penetrate enclosure
- Easy to remove lid
- High performance inserts



- integrated padlock hasp
- Flush-fit side mount swing panel and DIN rail system
- Molded in bosses
- Multi-directional mounting feet
- Single SKU with multiple cover attachment options

## General Information

|   |  |
|---|--|
| <b>Color</b>                                  | Gray   |
| <b>Cover Type</b>                             | Opaque   |
| <b>Mounting Type</b>                          | Wall Mount                                     |
| <b>Material</b>                               | Polycarbonate                                  |
| <b>Back Panel Screw Size</b>                  | #10-32x3/8                                     |
| <b>Back Panel Recommended Torque</b>          | 16-20 in-lbs.                                  |
| <b>Back Panel Screw Material</b>              | Zinc Plated                                    |
| <b>Cover Screw Size</b>                       | #10-32 x 5/8                                   |
| <b>Cover Screw Recommended Torque</b>         | 20-24 in-lbs.                                  |
| <b>Cover Screw Material</b>                   | 304 SS   |
| <b>Mounting Foot Screw Size</b>               | 1/4-20 x 1/2                                   |
| <b>Mounting Foot Screw Recommended Torque</b> | 10-14 in-lbs.                                  |
| <b>Installation Mounting Torque</b>           | 25-30 in-lbs. Max                              |
| <b>Metal Inserts</b>                          | Brass  |
| <b>Hinge Material</b>                         | Integral Polycarbonate                         |
| <b>Latch Material</b>                         | Polycarbonate                                  |
| <b>Gasket Material</b>                        | Poured In Place (PIP)<br>Polyurethane Seamless |
| <b>Country of Origin</b>                      | USA  |

## Dimensions

---

|                           |      |
|---------------------------|------|
| <b>Height (in)</b>        | 10   |
| <b>Width (in)</b>         | 10   |
| <b>Depth (in)</b>         | 6    |
| <b>Height (mm)</b>        | 254  |
| <b>Width (mm)</b>         | 254  |
| <b>Depth (mm)</b>         | 152  |
| <b>Useable Depth (in)</b> | 5.65 |
| <b>Useable Depth (mm)</b> | 144  |

## Standards

---

|  |                            |
|--|----------------------------|
| <b>NEMA 10250; UL 50; UL 50e; UL508A</b> | cULus Listed File #E319779 |
| <b>Type</b>                              | 1; 3R; 4; 4X; 6; 6P; 12    |
| <b>IEC 60529</b>                         | IP66; IP68                 |
| <b>IEC 60529</b>                         | cULus Listed File #E362920 |
| <b>Temperature Range °F</b>              | -40°F to +248°F            |
| <b>Temperature Range °C</b>              | -40°C to +120°C            |
| <b>Flammability Rating</b>               | UL94-5VA                   |
| <b>Outdoor Exposure UL746c</b>           | (f1) Rated                 |
| <b>CE</b>                                | Certified                  |

Latch Material  
Polycarbonate with UV Inhibitors