

Enclosures **Heartland Series**

Polycarbonate Enclosure 8 x 6 x 4 Inches Heartland with Opaque Cover



Catalog Number AH864

UPC 191564100814

List Price

\$141.87

Description

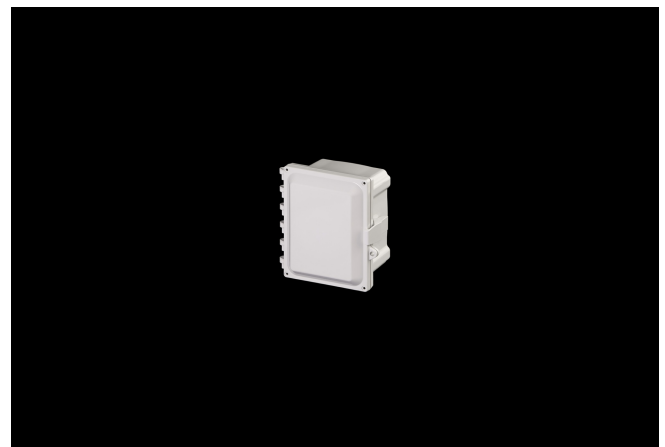
8H x 6W x 4D Inches Heartland (AH) Series is a high performance, polycarbonate enclosure applicable for heavy industrial conditions, but with a refined style suitable for commercial, industrial and OEM design applications. Heartland Series enclosures are rain-tight and watertight rated for use in both interior and exterior applications. This configuration features an opaque cover which is hinged, latched and padlockable.

Application

- Suitable for heavy industrial; commercial; and OEM applications
- Used to house electrical and electronic controls; instruments; and components
- Used indoors or outdoors
- Used in highly corrosive areas
- Provides protection against rain; sleet; snow; splashing water; hose-directed water; submersion; sun/UV and flame protection.

Features

- Latches and hinges do not penetrate enclosure
- Easy to remove lid
- High performance inserts



- integrated padlock hasp
- Flush-fit side mount swing panel and DIN rail system
- Molded in bosses
- Multi-directional mounting feet
- Single SKU with multiple cover attachment options

General Information

| | |
|---|--|
| Color | Gray |
| Cover Type | Opaque |
| Mounting Type | Wall Mount |
| Material | Polycarbonate |
| Back Panel Screw Size | #10-32x3/8 |
| Back Panel Recommended Torque | 16-20 in-lbs. |
| Back Panel Screw Material | Zinc Plated |
| Cover Screw Size | #10-32 x 5/8 |
| Cover Screw Recommended Torque | 20-24 in-lbs. |
| Cover Screw Material | 304 SS |
| Mounting Foot Screw Size | 1/4-20 x 1/2 |
| Mounting Foot Screw Recommended Torque | 10-14 in-lbs. |
| Installation Mounting Torque | 25-30 in-lbs. Max |
| Metal Inserts | Brass |
| Hinge Material | Integral Polycarbonate |
| Latch Material | Polycarbonate |
| Gasket Material | Poured In Place (PIP) Polyurethane Seamless |
| Country of Origin | USA |

Dimensions

| | |
|---------------------------|------|
| Height (in) | 8 |
| Width (in) | 6 |
| Depth (in) | 4 |
| Height (mm) | 203 |
| Width (mm) | 152 |
| Depth (mm) | 102 |
| Useable Depth (in) | 4.56 |
| Useable Depth (mm) | 116 |

Standards

| | |
|--|----------------------------|
| NEMA 10250; UL 50; UL 50e; UL508A | cULus Listed File #E319779 |
| Type | 1; 3R; 4; 4X; 6; 6P; 12 |
| IEC 60529 | IP66; IP68 |
| IEC 60529 | cULus Listed File #E362920 |
| Temperature Range °F | -40°F to +248°F |
| Temperature Range °C | -40°C to +120°C |
| Flammability Rating | UL94-5VA |
| Outdoor Exposure UL746c | (f1) Rated |
| CE | Certified |

Latch Material
Polycarbonate with UV Inhibitors