

Enclosures **BantamBox Series**

## Polycarbonate Enclosure 5 x 5 x 2 Inches BantamBox Opaque Cover



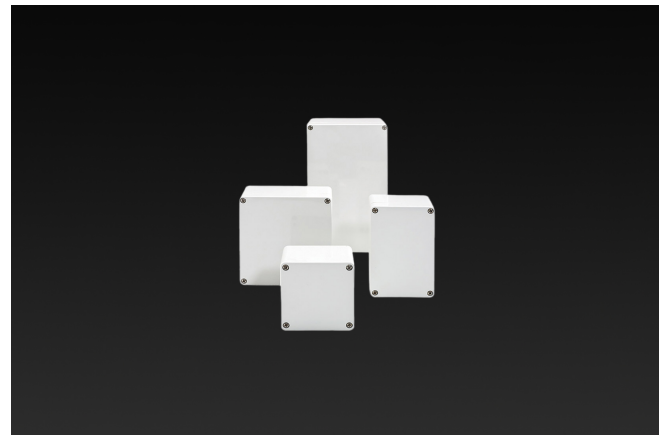
**Catalog Number** BB121255W  
**UPC** 191564104379.0

List Price

**\$56.69**

### Description

5H x 5W x 2D Inches BantamBox Series polycarbonate enclosures feature flush sides making it a sought-after enclosure for OEM designs. Raised bosses accommodate back panel mounting and are successfully used for remote sensor mounting and small electronic controls in any environment. This configuration features an opaque lift off cover with 4 cover screws.



### Application

Small; simple design ideal for OEMs in the electronics market; circuit boards and wiring applications

### Features

- Available in 2 cover options: 1. Opaque Cover; 2. Clear Polycarbonate Cover
- Multiple depths available in most sizes
- Resistant to harsh environments
- Flush sides for optimal fit
- Multiple molded in bosses for a variety of mounting solutions

## General Information

<b>Color</b>	Gray
<b>Cover Type</b>	Opaque
<b>Mounting Type</b>	Wall Mount
<b>Material</b>	Polycarbonate
<b>Back Panel Screw Size</b>	Plastite 48 #8
<b>Back Panel Recommended Torque</b>	12-16 in-lbs.
<b>Back Panel Screw Material</b>	304 SS
<b>Cover Screw Material</b>	304 SS
<b>Metal Inserts</b>	Brass
<b>Gasket Material</b>	Poured In Place (PIP) Polyurethane Seamless
<b>Country of Origin</b>	Germany

## Dimensions

<b>Height (in)</b>	5.0
<b>Width (in)</b>	5.0
<b>Depth (in)</b>	2.0
<b>Height (mm)</b>	120.0
<b>Width (mm)</b>	120.0
<b>Depth (mm)</b>	55.0
<b>Useable Depth (in)</b>	3.6
<b>Useable Depth (mm)</b>	91.0

Standards

NEMA 10250; UL 50; UL 50e; UL508A	cULus Listed File #E64358
Type	1; 3R; 4; 4X; 12
IEC 60529	IP66
IEC 60529	cULus Listed File #E362920
Temperature Range °F	-40°F to +212°F
Temperature Range °C	-40°C to +100°C
Flammability Rating	UL94-V2
Outdoor Exposure UL746c	(f1) Rated
CE	Certified