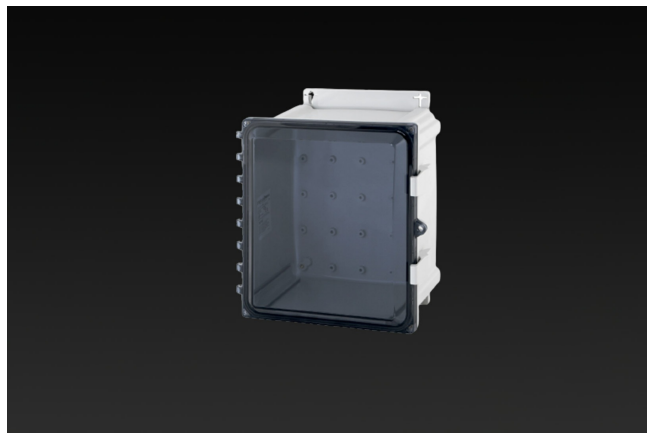


Enclosures **Heartland Series****Polycarbonate Enclosure 20 x 16 x 8 Inches Heartland with Opaque Cover, Weight Distribution Shelf****Catalog Number** AHWD20168**UPC** 19156411981.0

List Price

\$600.14**Description**

20H x 16W x 8D Heartland™ Series Opaque Cover Enclosure with an innovative weight distribution shelf provides an extremely rugged support system when adding heavy equipment in polycarbonate enclosures. Ideal for support when adding a power supply, battery, or heavy equipment which could potentially deflect the enclosure bottom wall.

**Application**

This innovative weight distribution shelf provides an extremely rugged support system when adding heavy equipment in polycarbonate enclosures.

Features

- Aluminum shelf supported by enclosure side walls reduces risk of deflection of the enclosure bottom wall when subjected to increased weight load
- Available in 7 SKUs designed for use with our polycarbonate enclosure sizes from 10"x10" to 24"x24"
- Constructed from strong, lightweight, corrosion resistant aluminum
- Fastening hardware included

- Flush-fit side mount swing panel and DIN rail system
- Molded in bosses
- Multi-directional mounting feet
- Single SKU with multiple cover attachment options

General Information

Color	Gray
Material	Polycarbonate
Back Panel Screw Size	#10-32x3/8
Back Panel Recommended Torque	16-20 in-lbs.
Back Panel Screw Material	Zinc Plated
Cover Screw Size	#10-32 x 5/8
Cover Screw Recommended Torque	20-24 in-lbs.
Cover Screw Material	304 SS
Mounting Foot Screw Size	1/4-20 x 1/2
Mounting Foot Screw Recommended Torque	10-14 in-lbs.
Installation Mounting Torque	25-30 in-lbs. Max
Metal Inserts	Brass
Hinge Material	Integral Polycarbonate
Latch Material	Polycarbonate
Gasket Material	Poured In Place (PIP) Polyurethane Seamless
Country of Origin	USA

Dimensions

Height (in)	20.0
Width (in)	16.0
Depth (in)	8.0
Height (mm)	508.0
Width (mm)	406.0
Depth (mm)	203.0
Useable Depth (in)	8.7
Useable Depth (mm)	220.0

Standards

NEMA 250; UL 50; UL 50e; UL508A	cULus Listed File #E319779
Type	1; 3R; 4; 4X; 12
IEC 60529	IP66
IEC 60529	cULus Listed File #E362920
Temperature Range °F	-40°F to +248°F
Temperature Range °C	-40°C to +120°C
Flammability Rating	UL94-5VA
Outdoor Exposure UL746c	(f1) Rated
CE	Certified

Latch Material
Polycarbonate with UV Inhibitors