

Enclosures **Heartland Series**

Polycarbonate Enclosure 18 x 16 x 10 Inches Heartland HW Opaque Screw Down Cover without Latches



Catalog Number AH181610HW

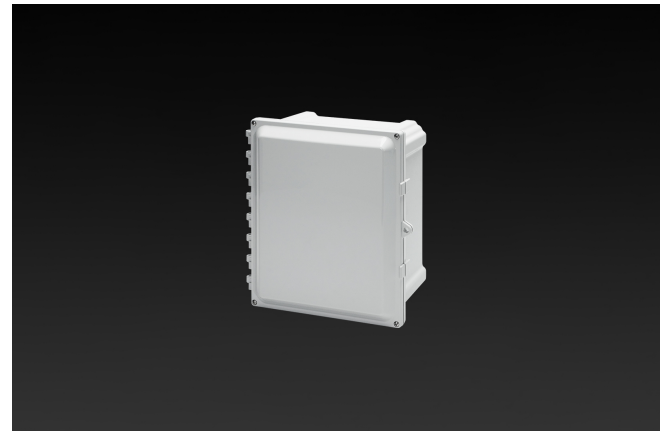
UPC 19156412061

List Price

\$336.77

Description

18H X 16W X 10D Inches Heartland™ Series is a high performance, polycarbonate enclosure applicable for heavy industrial conditions, but with a refined style suitable for commercial, industrial and OEM design applications. Heartland Series enclosures are rain-tight and watertight rated for use in both interior and exterior applications. This configuration features a screw down opaque cover without latches which is hinged and padlockable.



Application

Suitable for heavy industrial; commercial; and OEM applications

Features

- Non-metallic material construction with optional ABS Back Panel to allow unimpeded transmission of wireless signals
- Hinges do not penetrate enclosure
- Easy to remove cover
- High performance inserts
- Integrated Padlock Hasp
- Smooth Side Wall construction for easy fitting mounting and

alignment

- Molded in bosses for attachment of DIN rail
- Molded-in Mounting Feet / Flange Provided
- Single SKU with multiple cover attachment options
- Hinged Screw-Down, Without Latches

General Information

Color	Gray
Cover Type	Opaque
Mounting Type	Wall Mount
Material	Polycarbonate
Back Panel Screw Size	#10-32x3/8
Back Panel Recommended Torque	16-20 in-lbs.
Back Panel Screw Material	Zinc Plated
Cover Screw Size	#10-32 x 5/8
Cover Screw Recommended Torque	20-24 in-lbs.
Cover Screw Material	304 SS
Mounting Foot Screw Size	1/4-20 x 1/2
Mounting Foot Screw Recommended Torque	10-14 in-lbs.
Installation Mounting Torque	25-30 in-lbs. Max
Metal Inserts	Brass
Hinge Material	Integral Polycarbonate
Latch Material	
Gasket Material	Poured In Place (PIP) Polyurethane Seamless
Country of Origin	USA

Dimensions

Height (in)	18.0
Width (in)	16.0
Depth (in)	10.0
Height (mm)	457.0
Width (mm)	406.0
Depth (mm)	254.0
Useable Depth (in)	11.0
Useable Depth (mm)	268.0

Standards

NEMA 250; UL 50; UL 50e; UL508A; CSA Std. C22.2	cULus Listed File #E319779
Type	1; 3R; 4; 4X; 6P; 12
IEC 60529	IP66; IPX8
Temperature Range °F	-40°F to +248°F
Temperature Range °C	-40°C to +120°C
Flammability Rating	UL94-5VA
Outdoor Exposure UL746c	(f1) Rated
CE	Certified