

Enclosures **Heartland Series**

## Polycarbonate Enclosure 16 x 14 x 8 Inches Heartland HW Opaque Screw Down Cover without Latches



**Catalog Number** AH16148HW  
**UPC** 191564120607

List Price

**\$314.28**

### Description

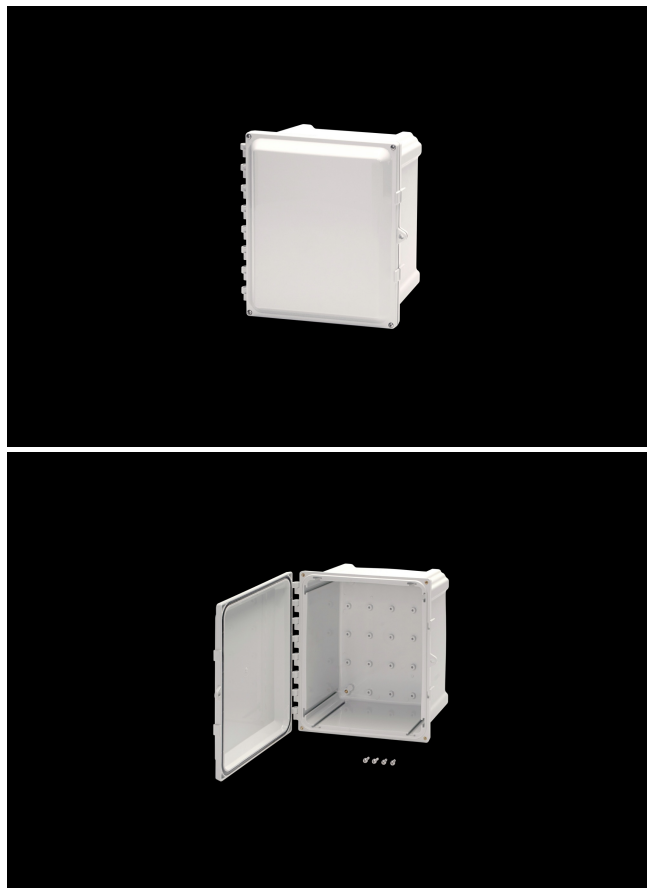
16H X 14W X 8D Inches Heartland™ Series is a high performance, polycarbonate enclosure applicable for heavy industrial conditions, but with a refined style suitable for commercial, industrial and OEM design applications. Heartland Series enclosures are rain-tight and watertight rated for use in both interior and exterior applications. This configuration features a screw down opaque cover without latches which is hinged and padlockable.

### Application

- Suitable for heavy industrial; commercial; and OEM applications
- Used to house electrical and electronic controls; instruments; and components
- Used indoors or outdoors
- Used in highly corrosive areas
- Provides protection against rain; sleet; snow; splashing water; hose-directed water; submersion; sun/UV and flame protection.

### Features

- Non-metallic material construction with optional ABS Back Panel to



allow unimpeded transmission of wireless signals

- Hinges do not penetrate enclosure
- Easy to remove cover
- High performance inserts
- Integrated Padlock Hasp
- Smooth Side Wall construction for easy fitting mounting and alignment
- Molded in bosses for attachment of DIN rail
- Molded-in Mounting Feet / Flange Provided
- Single SKU with multiple cover attachment options
- Hinged Screw-Down, Without Latches

## General Information

<b>Color</b>	Gray
<b>Cover Type</b>	Opaque
<b>Mounting Type</b>	Wall Mount
<b>Material</b>	Polycarbonate
<b>Back Panel Screw Size</b>	#10-32x3/8
<b>Back Panel Recommended Torque</b>	16-20 in-lbs.
<b>Back Panel Screw Material</b>	Zinc Plated
<b>Cover Screw Size</b>	#10-32 x 5/8
<b>Cover Screw Recommended Torque</b>	20-24 in-lbs.
<b>Cover Screw Material</b>	304 SS
<b>Mounting Foot Screw Size</b>	1/4-20 x 1/2
<b>Mounting Foot Screw Recommended Torque</b>	10-14 in-lbs.
<b>Installation Mounting Torque</b>	25-30 in-lbs. Max
<b>Metal Inserts</b>	Brass
<b>Hinge Material</b>	Integral Polycarbonate
<b>Latch Material</b>	
<b>Gasket Material</b>	Poured In Place (PIP) Polyurethane Seamless
<b>Country of Origin</b>	USA

## Dimensions

---

<b>Height (in)</b>	16
<b>Width (in)</b>	14
<b>Depth (in)</b>	8
<b>Height (mm)</b>	406
<b>Width (mm)</b>	356
<b>Depth (mm)</b>	203
<b>Useable Depth (in)</b>	9
<b>Useable Depth (mm)</b>	220

## Standards

---

<b>NEMA 10250; UL 50; UL 50e; UL508A; CSA Std. C22.2</b>	cULus Listed File #E319779
<b>Type</b>	1; 3R; 4; 4X; 6P; 12
<b>IEC 60529</b>	IP66; IP68
<b>Temperature Range °F</b>	-40°F to +248°F
<b>Temperature Range °C</b>	-40°C to +120°C
<b>Flammability Rating</b>	UL94-5VA
<b>Outdoor Exposure UL746c</b>	(f1) Rated
<b>CE</b>	Certified