

Enclosures **BantamBox Series**

Polycarbonate Enclosure 3 x 2 x 2 Inches BantamBox Opaque Cover



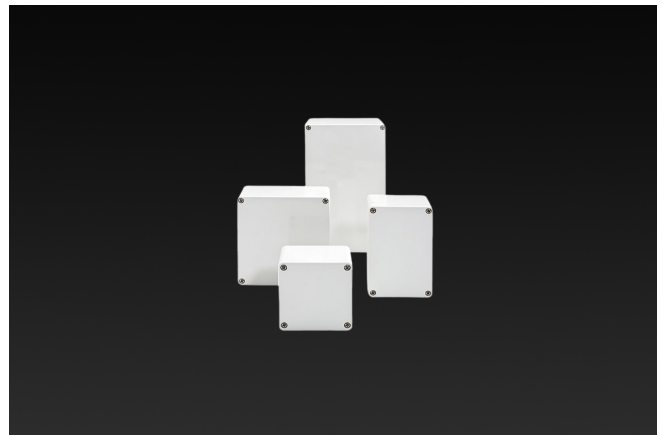
Catalog Number BB060555W
UPC 191564104157.0

List Price

\$33.84

Description

3H x 2W x 2D Inches BantamBox Series polycarbonate enclosures feature flush sides making it a sought-after enclosure for OEM designs. Raised bosses accommodate back panel mounting and are successfully used for remote sensor mounting and small electronic controls in any environment. This configuration features an opaque lift off cover with 4 cover screws.



Application

Small; simple design ideal for OEMs in the electronics market; circuit boards and wiring applications

Features

- Available in 2 cover options: 1. Opaque Cover; 2. Clear Polycarbonate Cover
- Multiple depths available in most sizes
- Resistant to harsh environments
- Flush sides for optimal fit
- Multiple molded in bosses for a variety of mounting solutions

General Information

Color	Gray
Cover Type	Opaque
Mounting Type	Wall Mount
Material	Polycarbonate
Back Panel Screw Size	Plastite 48 #8
Back Panel Recommended Torque	12-16 in-lbs.
Back Panel Screw Material	304 SS
Cover Screw Material	304 SS
Metal Inserts	Brass
Gasket Material	Poured In Place (PIP) Polyurethane Seamless
Country of Origin	Germany

Dimensions

Height (in)	3.0
Width (in)	2.0
Depth (in)	2.0
Height (mm)	76.2
Width (mm)	50.8
Depth (mm)	50.8
Useable Depth (in)	1.7
Useable Depth (mm)	44.0

Standards

NEMA 10250; UL 50; UL 50e; UL508A	cULus Listed File #E64358
Type	1; 3R; 4; 4X; 12
IEC 60529	IP66
IEC 60529	cULus Listed File #E362920
Temperature Range °F	-40°F to +212°F
Temperature Range °C	-40°C to +100°C
Flammability Rating	UL94-V2
Outdoor Exposure UL746c	(f1) Rated
CE	Certified