

Enclosures **Heartland Series**

Polycarbonate Enclosure 10 x 8 x 6 Inches Heartland HW Opaque Screw Down Cover without Latches



Catalog Number AH1086HW
UPC 191564120577

List Price

\$178.05

Description

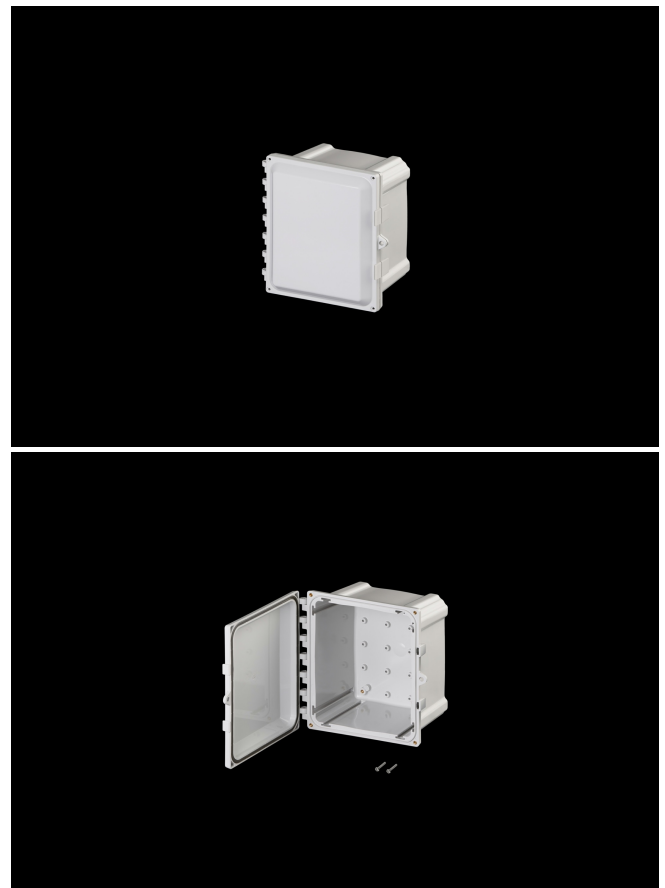
10H X 8W X 6D Inches Heartland™ Series is a high performance, polycarbonate enclosure applicable for heavy industrial conditions, but with a refined style suitable for commercial, industrial and OEM design applications. Heartland Series enclosures are rain-tight and watertight rated for use in both interior and exterior applications. This configuration features a screw down opaque cover without latches which is hinged and padlockable.

Application

- Suitable for heavy industrial; commercial; and OEM applications
- Used to house electrical and electronic controls; instruments; and components
- Used indoors or outdoors
- Used in highly corrosive areas
- Provides protection against rain; sleet; snow; splashing water; hose-directed water; submersion; sun/UV and flame protection.

Features

- Non-metallic material construction with optional ABS Back Panel to



allow unimpeded transmission of wireless signals

- Hinges do not penetrate enclosure
- Easy to remove cover
- High performance inserts
- Integrated Padlock Hasp
- Smooth Side Wall construction for easy fitting mounting and alignment
- Molded in bosses for attachment of DIN rail
- Molded-in Mounting Feet / Flange Provided
- Single SKU with multiple cover attachment options
- Hinged Screw-Down, Without Latches

General Information

Color	Gray
Cover Type	Opaque
Mounting Type	Wall Mount
Material	Polycarbonate
Back Panel Screw Size	#10-32x3/8
Back Panel Recommended Torque	16-20 in-lbs.
Back Panel Screw Material	Zinc Plated
Cover Screw Size	#10-32 x 5/8
Cover Screw Recommended Torque	20-24 in-lbs.
Cover Screw Material	304 SS
Mounting Foot Screw Size	1/4-20 x 1/2
Mounting Foot Screw Recommended Torque	10-14 in-lbs.
Installation Mounting Torque	25-30 in-lbs. Max
Metal Inserts	Brass
Hinge Material	Integral Polycarbonate
Latch Material	
Gasket Material	Poured In Place (PIP) Polyurethane Seamless
Country of Origin	USA

Dimensions

Height (in)	10
Width (in)	8
Depth (in)	6
Height (mm)	254
Width (mm)	203
Depth (mm)	152
Useable Depth (in)	7
Useable Depth (mm)	166

Standards

NEMA 10250; UL 50; UL 50e; UL508A; CSA Std. C22.2	cULus Listed File #E319779
Type	1; 3R; 4; 4X; 6P; 12
IEC 60529	IP66; IP68
Temperature Range °F	-40°F to +248°F
Temperature Range °C	-40°C to +120°C
Flammability Rating	UL94-5VA
Outdoor Exposure UL746c	(f1) Rated
CE	Certified