

Enclosures **Commander Series****Polycarbonate Enclosure 4 x 3 x 2 Inches Commander Yellow Push Button 22MM Hole****Catalog Number****YW-COPC1PB22****UPC****19156411712.0**

List Price

**\$99.11****Description**

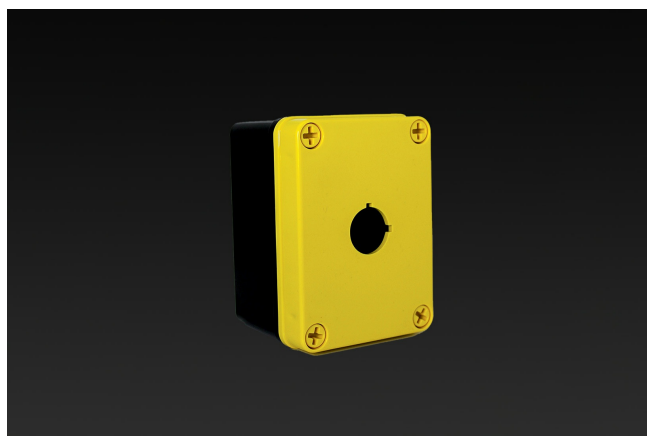
4H x 3W x 2D Inches Yellow Push Button Commander Series Polycarbonate Enclosures are slim-line designed enclosures featuring 4 cover screws with a lift off cover. This design has 1 hole at 22 mm.

**Application**

For use in many MRO and OEM applications

**Features**

- Memory retaining continuous polyurethane gasket
- Captive polymer cover screws on polycarbonate option
- Submersible; non corrosive; environmental design
- High Impact Resistance
- High visibility safety yellow cover
- High visibility safety yellow cover



## General Information

---

<b>Color</b>	Yellow
<b>Cover Type</b>	Push Button
<b>Mounting Type</b>	Wall Mount
<b>Material</b>	Polycarbonate
<b>Cover Screw Size</b>	Custom
<b>Cover Screw Recommended Torque</b>	16-20 in-lbs.
<b>Cover Screw Material</b>	Polycarbonate
<b>Installation Mounting Torque</b>	25-30 in-lbs. Max
<b>Metal Inserts</b>	None
<b>Gasket Material</b>	Poured In Place (PIP) Polyurethane Seamless
<b>Country of Origin</b>	USA

## Dimensions

---

<b>Height (in)</b>	4.0
<b>Width (in)</b>	3.0
<b>Depth (in)</b>	2.0
<b>Height (mm)</b>	102.0
<b>Width (mm)</b>	76.0
<b>Depth (mm)</b>	51.0
<b>Useable Depth (in)</b>	2.5
<b>Useable Depth (mm)</b>	64.0

## Standards

---

<b>NEMA 250; UL 50; UL 50e; UL508A</b>	cULus Listed File #E64358
--	---------------------------

<b>Type</b>	1; 3R; 4; 4X; 6; 6P; 12
-------------	-------------------------

<b>IEC 60529</b>	IP66; IP68
------------------	------------

<b>IEC 60529</b>	cULus Listed File #E362920
------------------	----------------------------

<b>Temperature Range °F</b>	-40°F to +248°F
-----------------------------	-----------------

<b>Temperature Range °C</b>	-40°C to +120°C
-----------------------------	-----------------

<b>Flammability Rating</b>	UL94-5VA
----------------------------	----------

<b>Outdoor Exposure UL746c</b>	(f1) Rated
--------------------------------	------------

<b>CE</b>	Certified
-----------	-----------