

Enclosures **BantamBox Series**

## Polycarbonate Enclosure 10 x 6 x 5 Inches BantamBox Opaque Cover



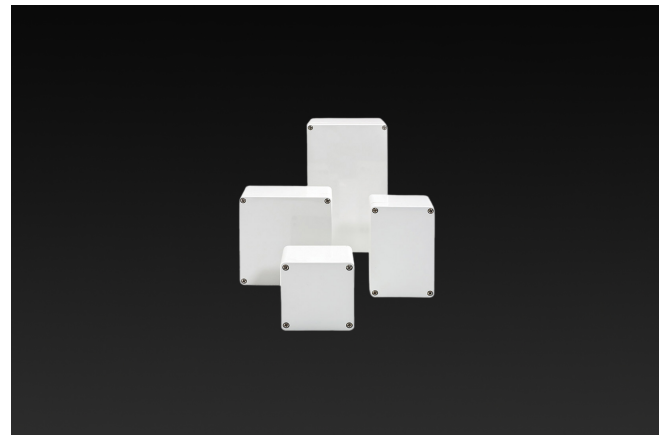
**Catalog Number** BB251612W  
**UPC** 191564104744

List Price

**\$129.75**

### Description

10H x 6W x 5D Inches BantamBox Series polycarbonate enclosures feature flush sides making it a sought-after enclosure for OEM designs. Raised bosses accommodate back panel mounting and are successfully used for remote sensor mounting and small electronic controls in any environment. This configuration features an opaque lift off cover with 4 cover screws.



### Application

Small; simple design ideal for OEMs in the electronics market; circuit boards and wiring applications

### Features

- Available in 2 cover options: 1. Opaque Cover; 2. Clear Polycarbonate Cover
- Multiple depths available in most sizes
- Resistant to harsh environments
- Flush sides for optimal fit
- Multiple molded in bosses for a variety of mounting solutions

## General Information

---

<b>Color</b>	Gray
<b>Cover Type</b>	Opaque
<b>Mounting Type</b>	Wall Mount
<b>Material</b>	Polycarbonate
<b>Back Panel Screw Size</b>	Plastite 48 #8
<b>Back Panel Recommended Torque</b>	12-16 in-lbs.
<b>Back Panel Screw Material</b>	304 SS
<b>Cover Screw Material</b>	304 SS
<b>Metal Inserts</b>	Brass
<b>Gasket Material</b>	Poured In Place (PIP) Polyurethane Seamless
<b>Country of Origin</b>	Germany

## Dimensions

---

<b>Height (in)</b>	10.0
<b>Width (in)</b>	6.0
<b>Depth (in)</b>	5.0
<b>Height (mm)</b>	250.0
<b>Width (mm)</b>	160.0
<b>Depth (mm)</b>	120.0
<b>Useable Depth (in)</b>	4.3
<b>Useable Depth (mm)</b>	109.0

## Standards

---

<b>NEMA 250; UL 50; UL 50e; UL508A</b>	cULus Listed File #E64358
<b>Type</b>	1; 3R; 4; 4X; 12
<b>IEC 60529</b>	IP66
<b>IEC 60529</b>	cULus Listed File #E362920
<b>Temperature Range °F</b>	-40°F to +212°F
<b>Temperature Range °C</b>	-40°C to +100°C
<b>Flammability Rating</b>	UL94-V2
<b>Outdoor Exposure UL746c</b>	(f1) Rated
<b>CE</b>	Certified