

Enclosures **Heartland Series**

Polycarbonate Enclosure 6 x 6 x 4 Inches Heartland with Clear Cover, Polycarbonate Latches and Mounting Flange



Catalog Number **AHF664C**

UPC **191564119847**

List Price

\$159.15

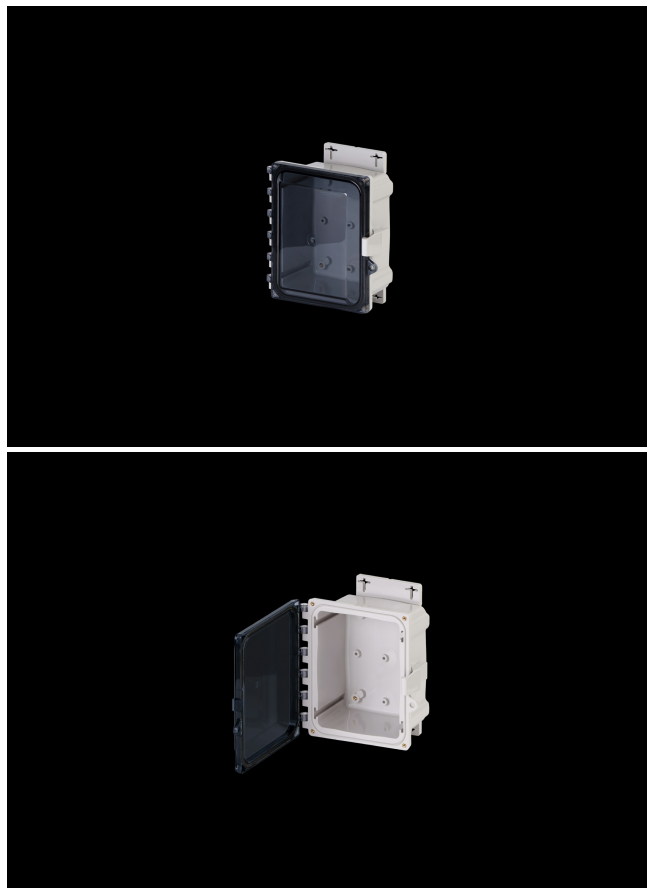
Description

6H x 6W x 4D Inches Heartland Series Polycarbonate Enclosures with Mounting Flanges are designed as a robust mounting option. They are ideal for non-hazardous industrial and commercial applications and are commonly used in electrical control, measurement and monitoring, security, oil and gas, manufacturing, and communications. They feature an innovative mounting cross which allows for multiple screw positions.

Additionally, the flange can be mounted on the top and bottom, or sides of the enclosure. They feature a water-shedding flange design contains a built-in radius to prevent accumulation of water. Polycarbonate Mounting Flanges can be ordered as a stand-alone accessory SKU or included with our Polycarbonate Enclosures. This configuration features a clear cover which is hinged, latched and padlockable.

Application

- Suitable for heavy industrial; commercial; and OEM applications
- Used to house electrical and electronic controls; instruments; and



components

- Used indoors or outdoors
- Used in highly corrosive areas
- Provides protection against rain; sleet; snow; splashing water; hose-directed water; submersion; sun/UV and flame protection.

Features

- Latches and hinges do not penetrate enclosure
- Easy to remove lid
- High performance inserts
- integrated padlock hasp
- Flush-fit side mount swing panel and DIN rail system
- Molded in bosses
- Multi-directional mounting feet
- Single SKU with multiple cover attachment options

General Information

Color	Gray
Cover Type	Clear
Mounting Type	Wall Mount
Material	Polycarbonate
Back Panel Screw Size	#10-32x3/8
Back Panel Recommended Torque	16-20 in-lbs.
Back Panel Screw Material	Zinc Plated
Cover Screw Size	#10-32 x 5/8
Cover Screw Recommended Torque	20-24 in-lbs.
Cover Screw Material	304 SS
Mounting Foot Screw Size	1/4-20 x 1/2
Mounting Foot Screw Recommended Torque	10-14 in-lbs.
Installation Mounting Torque	25-30 in-lbs. Max
Metal Inserts	Brass
Hinge Material	Integral Polycarbonate
Latch Material	Polycarbonate
Gasket Material	Poured In Place (PIP) Polyurethane Seamless
Country of Origin	USA

Dimensions

Height (in)	6
Width (in)	6
Depth (in)	4
Height (mm)	152
Width (mm)	152
Depth (mm)	102
Useable Depth (in)	4.5
Useable Depth (mm)	114

Standards

NEMA 10250; UL 50; UL 50e; UL508A	cULus Listed File #E319779
Type	1; 3R; 4; 4X; 6; 6P; 12
IEC 60529	IP66; IP68
IEC 60529	cULus Listed File #E362920
Temperature Range °F	-40°F to +248°F
Temperature Range °C	-40°C to +120°C
Flammability Rating	UL94-5VA
Outdoor Exposure UL746c	(f1) Rated
CE	Certified

Latch Material
Polycarbonate with UV Inhibitors