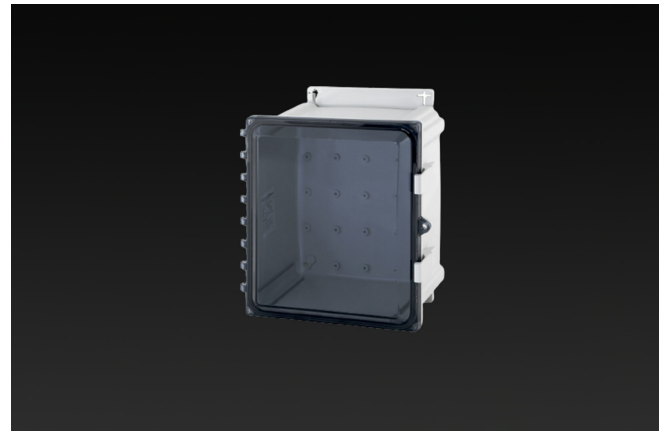


Enclosures **Heartland Series****Polycarbonate Enclosure 12 x 10 x 6 Inches Heartland with Opaque Cover, Weight Distribution Shelf****Catalog Number** AHWD12106  
**UPC** 19156411977.0

List Price

**\$281.40****Description**

12H x 10W x 6D Heartland™ Series Opaque Cover Enclosure with an innovative weight distribution shelf provides an extremely rugged support system when adding heavy equipment in polycarbonate enclosures. Ideal for support when adding a power supply, battery, or heavy equipment which could potentially deflect the enclosure bottom wall.

**Application**

This innovative weight distribution shelf provides an extremely rugged support system when adding heavy equipment in polycarbonate enclosures.

**Features**

- Aluminum shelf supported by enclosure side walls reduces risk of deflection of the enclosure bottom wall when subjected to increased weight load
- Available in 7 SKUs designed for use with our polycarbonate enclosure sizes from 10"x10" to 24"x24"
- Constructed from strong, lightweight, corrosion resistant aluminum
- Fastening hardware included

- Flush-fit side mount swing panel and DIN rail system
- Molded in bosses
- Multi-directional mounting feet
- Single SKU with multiple cover attachment options

## General Information

<b>Color</b>	Gray
<b>Material</b>	Polycarbonate
<b>Back Panel Screw Size</b>	#10-32x3/8
<b>Back Panel Recommended Torque</b>	16-20 in-lbs.
<b>Back Panel Screw Material</b>	Zinc Plated
<b>Cover Screw Size</b>	#10-32 x 5/8
<b>Cover Screw Recommended Torque</b>	20-24 in-lbs.
<b>Cover Screw Material</b>	304 SS
<b>Mounting Foot Screw Size</b>	1/4-20 x 1/2
<b>Mounting Foot Screw Recommended Torque</b>	10-14 in-lbs.
<b>Installation Mounting Torque</b>	25-30 in-lbs. Max
<b>Metal Inserts</b>	Brass
<b>Hinge Material</b>	Integral Polycarbonate
<b>Latch Material</b>	Polycarbonate
<b>Gasket Material</b>	Poured In Place (PIP) Polyurethane Seamless
<b>Country of Origin</b>	USA

## Dimensions

<b>Height (in)</b>	12.0
<b>Width (in)</b>	10.0
<b>Depth (in)</b>	6.0
<b>Height (mm)</b>	305.0
<b>Width (mm)</b>	254.0
<b>Depth (mm)</b>	152.0
<b>Useable Depth (in)</b>	6.6
<b>Useable Depth (mm)</b>	167.0

## Standards

---

<b>NEMA 250; UL 50; UL 50e; UL508A</b>	cULus Listed File #E319779
<b>Type</b>	1; 3R; 4; 4X; 6; 6P; 12
<b>IEC 60529</b>	IP66; IP68
<b>IEC 60529</b>	cULus Listed File #E362920
<b>Temperature Range °F</b>	-40°F to +248°F
<b>Temperature Range °C</b>	-40°C to +120°C
<b>Flammability Rating</b>	UL94-5VA
<b>Outdoor Exposure UL746c</b>	(f1) Rated
<b>CE</b>	Certified

Latch Material  
Polycarbonate with UV Inhibitors