

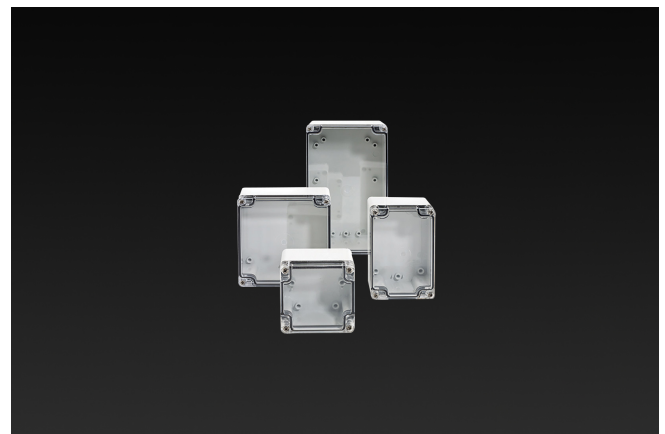
Enclosures **BantamBox Series****Polycarbonate Enclosure 6 x 5 x 6 Inches BantamBox Clear Cover**

**Catalog Number** BBCC161214W  
**UPC** 191564105345.0

List Price

**\$97.69****Description**

6H x 5W x 6D Inches BantamBox Series polycarbonate enclosures feature flush sides making it a sought-after enclosure for OEM designs. Raised bosses accommodate back panel mounting and are successfully used for remote sensor mounting and small electronic controls in any environment. This configuration features a clear lift off cover with 4 cover screws.

**Application**

Small; simple design ideal for OEMs in the electronics market; circuit boards and wiring applications

**Features**

- Available in 2 cover options: 1. Opaque Cover; 2. Clear Polycarbonate Cover
- Multiple depths available in most sizes
- Resistant to harsh environments
- Flush sides for optimal fit
- Multiple molded in bosses for a variety of mounting solutions

## General Information

---

<b>Color</b>	Gray
<b>Cover Type</b>	Clear
<b>Mounting Type</b>	Wall Mount
<b>Material</b>	Polycarbonate
<b>Back Panel Screw Size</b>	Plastite 48 #8
<b>Back Panel Recommended Torque</b>	12-16 in-lbs.
<b>Back Panel Screw Material</b>	304 SS
<b>Cover Screw Material</b>	304 SS
<b>Metal Inserts</b>	Brass
<b>Gasket Material</b>	Poured In Place (PIP) Polyurethane Seamless
<b>Country of Origin</b>	Germany

## Dimensions

---

<b>Height (in)</b>	6.0
<b>Width (in)</b>	5.0
<b>Depth (in)</b>	6.0
<b>Height (mm)</b>	160.0
<b>Width (mm)</b>	120.0
<b>Depth (mm)</b>	140.0
<b>Useable Depth (in)</b>	3.7
<b>Useable Depth (mm)</b>	95.0

## Standards

---

**NEMA 250; UL 50; UL 50e;  
UL508A** cULus Listed File #E64358

**Type** 1; 3R; 4; 4X; 12

**IEC 60529** IP66

**IEC 60529** cULus Listed File #E362920

**Temperature Range °F** -40°F to +212°F

**Temperature Range °C** -40°C to +100°C

**Flammability Rating** UL94-V2

**Outdoor Exposure UL746c** (f1) Rated

**CE** Certified