

Enclosures **Heartland Series**

Polycarbonate Enclosure 6 x 6 x 4 Inches Heartland with Clear Cover with Stainless Steel Latches



Catalog Number AH664CSS

UPC 191564116655

List Price

\$155.40

Description

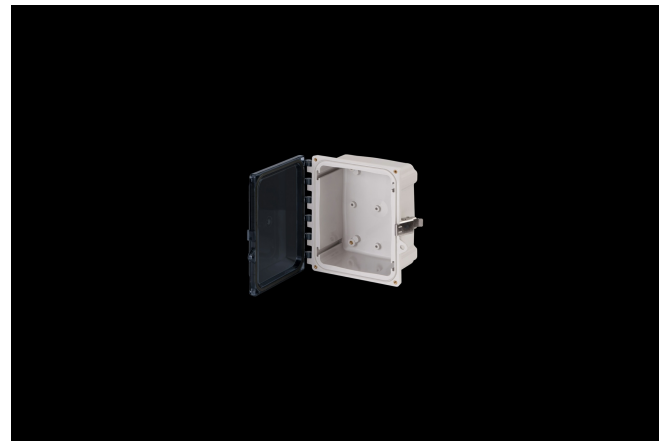
6H x 6W x 4D Inches Heartland (AH) Series is a high performance, polycarbonate enclosure applicable for heavy industrial conditions, but with a refined style suitable for commercial, industrial and OEM design applications. Heartland Series enclosures are rain-tight and watertight rated for use in both interior and exterior applications. This configuration features a clear cover which is hinged, latched and padlockable with stainless steel latches.

Application

- Suitable for heavy industrial; commercial; and OEM applications
- Used to house electrical and electronic controls; instruments; and components
- Used indoors or outdoors
- Used in highly corrosive areas
- Provides protection against rain; sleet; snow; splashing water; hose-directed water; submersion; sun/UV and flame protection.

Features

- Latches and hinges do not penetrate enclosure



- Easy to remove lid
- High performance inserts
- integrated padlock hasp
- Flush-fit side mount swing panel and DIN rail system
- Molded in bosses
- Multi-directional mounting feet
- Single SKU with multiple cover attachment options

General Information

Color	Gray
Cover Type	Clear
Mounting Type	Wall Mount
Material	Polycarbonate
Back Panel Screw Size	#10-32x3/8
Back Panel Recommended Torque	16-20 in-lbs.
Back Panel Screw Material	Zinc Plated
Cover Screw Size	#10-32 x 5/8
Cover Screw Recommended Torque	20-24 in-lbs.
Cover Screw Material	304 SS
Mounting Foot Screw Size	1/4-20 x 1/2
Mounting Foot Screw Recommended Torque	10-14 in-lbs.
Installation Mounting Torque	25-30 in-lbs. Max
Metal Inserts	Brass
Hinge Material	Integral Polycarbonate
Latch Material	316 SS
Gasket Material	Poured In Place (PIP) Polyurethane Seamless
Country of Origin	USA

Dimensions

Height (in)	6
Width (in)	6
Depth (in)	4
Height (mm)	152
Width (mm)	152
Depth (mm)	102
Useable Depth (in)	4.5
Useable Depth (mm)	114

Standards

NEMA 10250; UL 50; UL 50e; UL508A	cULus Listed File #E319779
Type	1; 3R; 4; 4X; 12
IEC 60529	
Temperature Range °F	-40°F to +248°F
Temperature Range °C	-40°C to +120°C
Flammability Rating	UL94-5VA
Outdoor Exposure UL746c	(f1) Rated
CE	Certified

Latch Material
Stainless Steel