

Enclosures **Commander Series**

## Polycarbonate Enclosure 4 x 3 x 2 Inches Commander Push Button 22 mm Hole



**Catalog Number** COPC1PB22  
**UPC** 191564104034

List Price

**\$87.41**

### Description

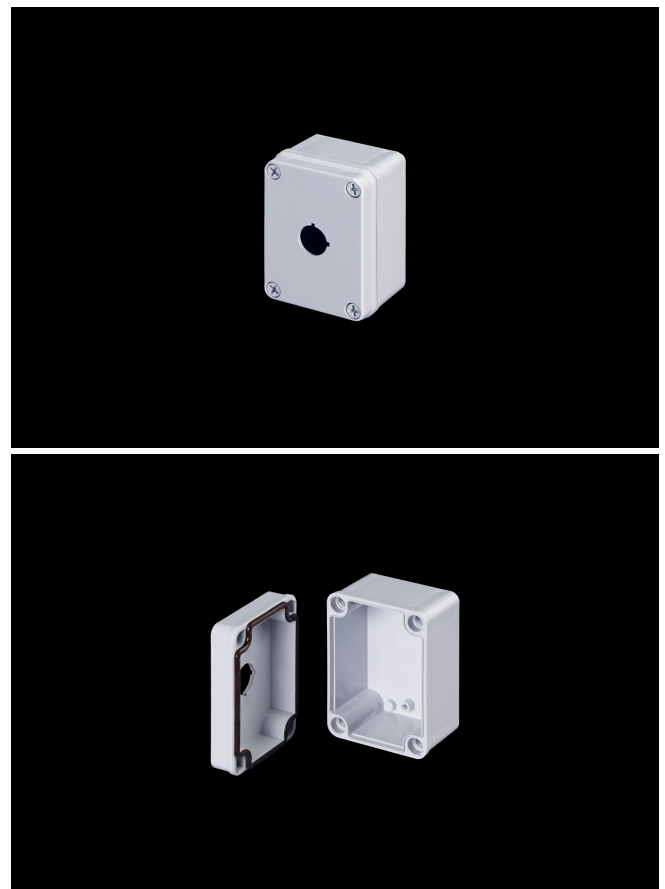
4H x 3W x 2D Inches Push Button Commander Series Polycarbonate Enclosures are slim-line designed enclosures featuring 4 cover screws with a lift off cover. This design has 1 hole at 22 mm.

### Application

- For use in many MRO and OEM applications
- Slim design allows easy installation of pushbuttons and switches in machine control applications with tight or dense space requirements
- Used in compact or portable control systems or for use as an Operator Interface Enclosures in both indoor and outdoor environments
- These unique in-line enclosures house pushbuttons; switches and pilot lights in both 30mm and 22mm configurations
- Used indoors or outdoors

### Features

- Memory retaining continuous polyurethane gasket
- Captive polymer cover screws on polycarbonate option
- Submersible; non corrosive; environmental design
- High Impact Resistance



## General Information

---

<b>Color</b>	Gray
<b>Cover Type</b>	Push Button
<b>Mounting Type</b>	Wall Mount
<b>Material</b>	Polycarbonate
<b>Cover Screw Size</b>	Custom
<b>Cover Screw Recommended Torque</b>	16-20 in-lbs.
<b>Cover Screw Material</b>	Polycarbonate
<b>Installation Mounting Torque</b>	25-30 in-lbs. Max
<b>Metal Inserts</b>	
<b>Gasket Material</b>	Poured In Place (PIP) Polyurethane Seamless
<b>Country of Origin</b>	USA

## Dimensions

---

<b>Height (in)</b>	4
<b>Width (in)</b>	3
<b>Depth (in)</b>	2
<b>Height (mm)</b>	102
<b>Width (mm)</b>	76
<b>Depth (mm)</b>	51
<b>Useable Depth (in)</b>	2.51
<b>Useable Depth (mm)</b>	64

## Standards

---

<b>NEMA 10250; UL 50; UL 50e; UL508A</b>	cULus Listed File #E64358
<b>Type</b>	1; 3R; 4; 4X; 6; 6P; 12
<b>IEC 60529</b>	IP66; IP68
<b>IEC 60529</b>	cULus Listed File #E362920
<b>Temperature Range °F</b>	-40°F to +248°F
<b>Temperature Range °C</b>	-40°C to +120°C
<b>Flammability Rating</b>	UL94-5VA
<b>Outdoor Exposure UL746c</b>	(f1) Rated
<b>CE</b>	Certified