

Enclosures **Heartland SL Series**

Polycarbonate Shallow Depth Enclosure 12 x 10 x 4 Inches Heartland HW Opaque Screw Down Cover without Latches



Catalog Number AH12104HW

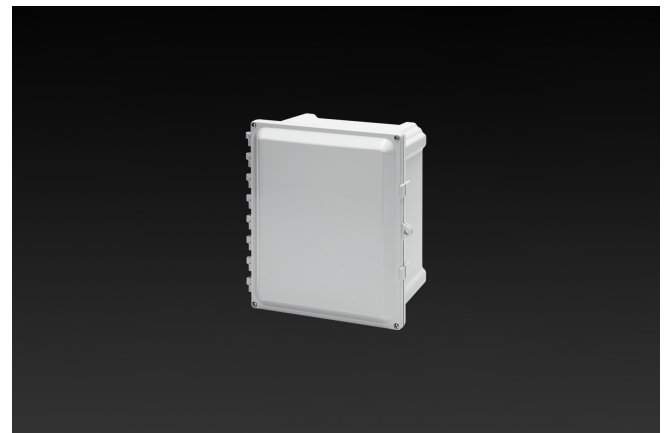
UPC 19156412072

List Price

\$204.01

Description

12H X 10W X 4D Inches Heartland™ Series is a high performance, shallow depth, polycarbonate enclosure applicable for heavy industrial conditions, but with a refined style suitable for commercial, industrial and OEM design applications. Heartland Series enclosures are rain-tight and watertight rated for use in both interior and exterior applications. This configuration features a screw down opaque cover without latches which is hinged and padlockable.



Application

For use in applications requiring shallow depth, low-profile enclosures

Features

- Low-profile design provides the perfect depth for smaller components while maintaining a large footprint to accommodate interior mounted antennae
- Non-metallic material construction with optional ABS Back Panel to allow unimpeded transmission of wireless signals
- Hinges do not penetrate enclosure

- Easy to remove cover
- High performance inserts
- Integrated Padlock Hasp
- Smooth Side Wall construction for easy fitting mounting and alignment
- Molded in bosses for attachment of DIN rail
- Molded-in Mounting Feet / Flange Provided
- Single SKU with multiple cover attachment options
- Hinged Screw-Down, Without Latches

General Information

| | |
|-------------------------------------------------|------------------------------------------------|
| Color | Gray |
| Cover Type | Opaque |
| Mounting Type | Wall Mount |
| Material | Polycarbonate |
| Back Panel Screw Size | #10-32x3/8 |
| Back Panel Recommended Torque | 16-20 in-lbs |
| Back Panel Screw Material | Zinc Plated |
| Cover Screw Size | #10-32 x 5/8 |
| Cover Screw Recommended Torque | 20-24 in-lbs |
| Cover Screw Material | 304 SS |
| Mounting Flange Screw Size | 1/4-20 x 1/2 |
| Mounting Flange Screw Recommended Torque | 10-14 in-lbs |
| Installation Mounting Torque | 25-30 in-lbs Max |
| Metal Inserts | Brass |
| Hinge Material | Integral Polycarbonate |
| Latch Material | |
| Gasket Material | Poured In Place (PIP) Polyurethane Seamless |
| Country of Origin | USA |

Dimensions

| | |
|---------------------------|-------|
| Height (in) | 12.0 |
| Width (in) | 10.0 |
| Depth (in) | 4.0 |
| Height (mm) | 305.0 |
| Width (mm) | 254.0 |
| Depth (mm) | 102.0 |
| Useable Depth (in) | 4.6 |
| Useable Depth (mm) | 117.1 |

Standards

| | |
|------------------------------------------------------------|----------------------------|
| NEMA 250; UL 50; UL 50e; UL508A; CSA Std. C22.2 | cULus Listed File #E319779 |
| Type | 1; 3R; 4; 4X; 6P; 12 |
| IEC 60529 | IP66; IP68 |
| Temperature Range °F | -40°F to +248°F |
| Temperature Range °C | -40°C to +120°C |
| Flamability Rating | UL94-5VA |
| Outdoor Exposure UL746c | (f1) Rated |
| CE | Certified |