

Enclosures **Heartland Series**

## **Polycarbonate Enclosure 14 x 12 x 6 Inches Heartland with Clear Cover, Polycarbonate Latches and Mounting Flange**



**Catalog Number**      **AHF14126C**

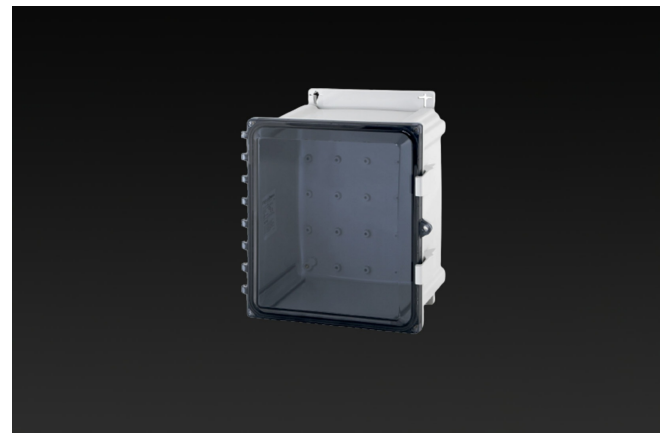
**UPC**                      **19156411998**

List Price

**\$296.31**

### **Description**

14H x 12W x 6D Inches Heartland Series Polycarbonate Enclosures with Mounting Flanges are designed as a robust mounting option. They are ideal for non-hazardous industrial and commercial applications and are commonly used in electrical control, measurement and monitoring, security, oil and gas, manufacturing, and communications. They feature an innovative mounting cross which allows for multiple screw positions. Additionally, the flange can be mounted on the top and bottom, or sides of the enclosure. They feature a water-shedding flange design contains a built-in radius to prevent accumulation of water. Polycarbonate Mounting Flanges can be ordered as a stand-alone accessory SKU or included with our Polycarbonate Enclosures. This configuration features a clear cover which is hinged, latched and padlockable.



### **Application**

Suitable for heavy industrial; commercial; and OEM applications

## Features

- Latches and hinges do not penetrate enclosure
- Easy to remove lid
- High performance inserts
- Integrated padlock hasp
- Flush-fit side mount swing panel and DIN rail system
- Molded in bosses
- Multi-directional mounting feet
- Single SKU with multiple cover attachment options

## General Information

<b>Color</b>	Gray
<b>Cover Type</b>	Clear
<b>Mounting Type</b>	Wall Mount
<b>Material</b>	Polycarbonate
<b>Back Panel Screw Size</b>	#10-32x3/8
<b>Back Panel Recommended Torque</b>	16-20 in-lbs.
<b>Back Panel Screw Material</b>	Zinc Plated
<b>Cover Screw Size</b>	#10-32 x 5/8
<b>Cover Screw Recommended Torque</b>	20-24 in-lbs.
<b>Cover Screw Material</b>	304 SS
<b>Mounting Foot Screw Size</b>	1/4-20 x 1/2
<b>Mounting Foot Screw Recommended Torque</b>	10-14 in-lbs.
<b>Installation Mounting Torque</b>	25-30 in-lbs. Max
<b>Metal Inserts</b>	Brass
<b>Hinge Material</b>	Integral Polycarbonate
<b>Latch Material</b>	Polycarbonate
<b>Gasket Material</b>	Poured In Place (PIP) Polyurethane Seamless
<b>Country of Origin</b>	USA

## Dimensions

<b>Height (in)</b>	14.0
<b>Width (in)</b>	12.0
<b>Depth (in)</b>	6.0
<b>Height (mm)</b>	356.0
<b>Width (mm)</b>	305.0
<b>Depth (mm)</b>	153.0
<b>Useable Depth (in)</b>	6.6
<b>Useable Depth (mm)</b>	167.0

## Standards

<b>NEMA 250; UL 50; UL 50e; UL508A</b>	cULus Listed File #E319779
<b>Type</b>	1; 3R; 4; 4X; 6; 6P; 12
<b>IEC 60529</b>	IP66; IP68
<b>IEC 60529</b>	cULus Listed File #E362920
<b>Temperature Range °F</b>	-40°F to +248°F
<b>Temperature Range °C</b>	-40°C to +120°C
<b>Flammability Rating</b>	UL94-5VA
<b>Outdoor Exposure UL746c</b>	(f1) Rated
<b>CE</b>	Certified

Latch Material  
Polycarbonate with UV Inhibitors