

Enclosures **Heartland SL Series**

## Polycarbonate Shallow Depth Enclosure 24 x 24 x 6 Inches Heartland with Clear Cover, Stainless Steel Latches



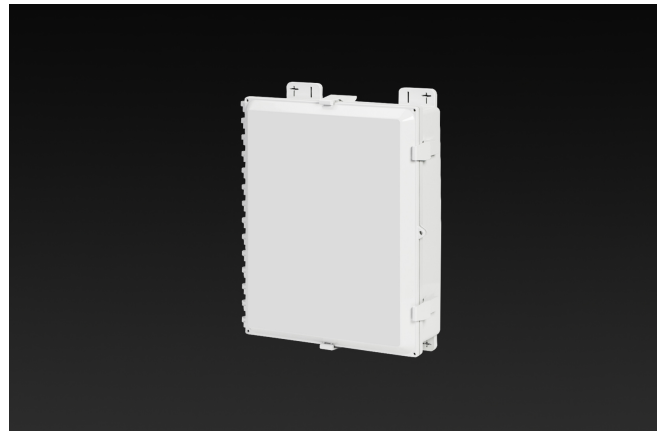
**Catalog Number** AH24246CSS  
**UPC** 19156412040.0

List Price

**\$967.98**

### Description

24H x 24W x 6D Inches Heartland™ Series is a high performance, shallow depth, polycarbonate enclosure applicable for heavy industrial conditions, but with a refined style suitable for commercial, industrial and OEM design applications. Heartland Series enclosures are rain-tight and watertight rated for use in both interior and exterior applications. This configuration features a clear cover with stainless steel latches which is hinged, latched, and padlockable.



### Application

For use in applications requiring shallow depth, low-profile enclosures

### Features

- Low-profile design provides the perfect depth for smaller components while maintaining a large footprint to accommodate interior mounted antennae
- Non-metallic material construction with optional ABS Back Panel to allow unimpeded transmission of wireless signals
- Hinges do not penetrate enclosure

- Easy to remove cover
- High performance inserts
- Integrated padlock hasp
- Smooth Side Wall construction for easy fitting mounting and alignment
- Molded in bosses for attachment of DIN rail
- Molded-in Mounting Feet / Flange Provided
- Single SKU with multiple cover attachment options

## General Information

<b>Color</b>	Gray
<b>Cover Type</b>	Clear
<b>Mounting Type</b>	Wall Mount
<b>Material</b>	Polycarbonate
<b>Back Panel Screw Size</b>	#10-32x3/8
<b>Back Panel Recommended Torque</b>	16-20 in-lbs
<b>Back Panel Screw Material</b>	Zinc Plated
<b>Cover Screw Size</b>	#10-32 x 5/8
<b>Cover Screw Recommended Torque</b>	20-24 in-lbs
<b>Cover Screw Material</b>	304 SS
<b>Installation Mounting Torque</b>	25-30 in-lbs Max
<b>Metal Inserts</b>	Brass
<b>Hinge Material</b>	Integral Polycarbonate
<b>Latch Material</b>	Stainless Steel
<b>Gasket Material</b>	Poured In Place (PIP) Polyurethane Seamless
<b>Country of Origin</b>	USA

## Dimensions

Height (in)	24.0
Width (in)	24.0
Depth (in)	6.0
Height (mm)	609.6
Width (mm)	609.6
Depth (mm)	152.4
Useable Depth (in)	7.1
Useable Depth (mm)	179.8

## Standards

<b>NEMA 10250; UL 50; UL 50e; UL508A</b>	cULus Listed File #E319779
<b>Type</b>	1; 3R; 4; 4X; 12
<b>IEC 60529</b>	IP66
<b>IEC 60529</b>	cULus Listed File #E319779
<b>Temperature Range °F</b>	-40°F to +248°F
<b>Temperature Range °C</b>	-40°C to +120°C
<b>Flamability Rating</b>	UL94-5VA
<b>Outdoor Exposure UL746c</b>	(fI) Rated
<b>CE</b>	Certified