

Enclosures **Heartland SL Series**

Polycarbonate Shallow Depth Enclosure 10 x 8 x 3 Inches Heartland with Stainless Steel Latches



Catalog Number

AH1083SS

UPC

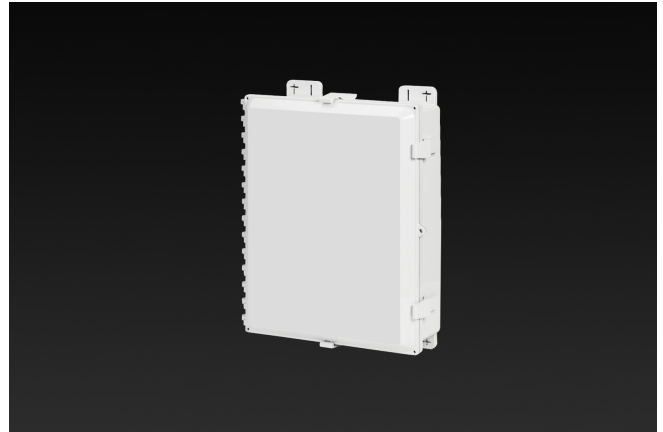
19156412029.0

List Price

\$164.33

Description

10H x 8W x 3D Inches Heartland™ Series is a high performance, shallow depth, polycarbonate enclosure applicable for heavy industrial conditions, but with a refined style suitable for commercial, industrial and OEM design applications. Heartland Series enclosures are rain-tight and watertight rated for use in both interior and exterior applications. This configuration features an opaque cover with stainless steel latches which is hinged, latched, and padlockable.



Application

For use in applications requiring shallow depth, low-profile enclosures

Features

- Low-profile design provides the perfect depth for smaller components while maintaining a large footprint to accommodate interior mounted antennae
- Non-metallic material construction with optional ABS Back Panel to allow unimpeded transmission of wireless signals
- Hinges do not penetrate enclosure

- Easy to remove cover
- High performance inserts
- Integrated padlock hasp
- Smooth Side Wall construction for easy fitting mounting and alignment
- Molded in bosses for attachment of DIN rail
- Molded-in Mounting Feet / Flange Provided
- Single SKU with multiple cover attachment options

General Information

Color	Gray
Cover Type	Opaque
Mounting Type	Wall Mount
Material	Polycarbonate
Back Panel Screw Size	#10-32x3/8
Back Panel Recommended Torque	16-20 in-lbs
Back Panel Screw Material	Zinc Plated
Cover Screw Size	#10-32 x 5/8
Cover Screw Recommended Torque	20-24 in-lbs
Cover Screw Material	304 SS
Installation Mounting Torque	25-30 in-lbs Max
Metal Inserts	Brass
Hinge Material	Integral Polycarbonate
Latch Material	Stainless Steel
Gasket Material	Poured In Place (PIP) Polyurethane Seamless
Country of Origin	USA

Dimensions

Height (in)	10.0
Width (in)	8.0
Depth (in)	3.0
Height (mm)	254.0
Width (mm)	203.2
Depth (mm)	76.2
Useable Depth (in)	4.3
Useable Depth (mm)	109.5

Standards

NEMA 10250; UL 50; UL 50e; UL508A	cULus Listed File #E319779
Type	1; 3R; 4; 4X; 6P; 12
IEC 60529	IP66; IP68
IEC 60529	cULus Listed File #E319779
Temperature Range °F	-40°F to +248°F
Temperature Range °C	-40°C to +120°C
Flamability Rating	UL94-5VA
Outdoor Exposure UL746c	(fI) Rated
CE	Certified