

Enclosures **Heartland Series****Polycarbonate Enclosure 8 x 8 x 4 Inches Heartland with Clear Cover with Stainless Steel Latches**

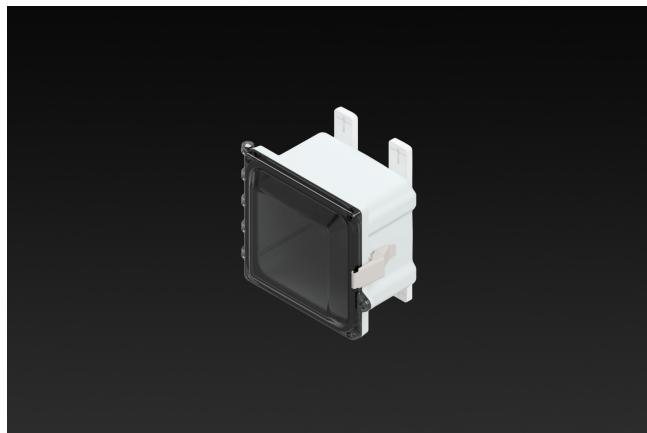
**Catalog Number** AH884CSS  
**UPC** 19156411667.0

List Price

**\$164.57**

## Description

8H x 8W x 4D Inches Heartland (AH) Series is a high performance, polycarbonate enclosure applicable for heavy industrial conditions, but with a refined style suitable for commercial, industrial and OEM design applications. Heartland Series enclosures are rain-tight and watertight rated for use in both interior and exterior applications. This configuration features a clear cover which is hinged, latched and padlockable with stainless steel latches.



## Application

Suitable for heavy industrial; commercial; and OEM applications

## Features

- Latches and hinges do not penetrate enclosure
- Easy to remove lid
- High performance inserts
- integrated padlock hasp
- Flush-fit side mount swing panel and DIN rail system
- Molded in bosses
- Multi-directional mounting feet

- Single SKU with multiple cover attachment options

## General Information

|   |  |
|---|--|
| <b>Color</b>                                  | Gray   |
| <b>Cover Type</b>                             | Clear  |
| <b>Mounting Type</b>                          | Wall Mount                                     |
| <b>Material</b>                               | Polycarbonate                                  |
| <b>Back Panel Screw Size</b>                  | #10-32x3/8                                     |
| <b>Back Panel Recommended Torque</b>          | 16-20 in-lbs.                                  |
| <b>Back Panel Screw Material</b>              | Zinc Plated                                    |
| <b>Cover Screw Size</b>                       | #10-32 x 5/8                                   |
| <b>Cover Screw Recommended Torque</b>         | 20-24 in-lbs.                                  |
| <b>Cover Screw Material</b>                   | 304 SS   |
| <b>Mounting Foot Screw Size</b>               | 1/4-20 x 1/2                                   |
| <b>Mounting Foot Screw Recommended Torque</b> | 10-14 in-lbs.                                  |
| <b>Installation Mounting Torque</b>           | 25-30 in-lbs. Max                              |
| <b>Metal Inserts</b>                          | Brass  |
| <b>Hinge Material</b>                         | Integral Polycarbonate                         |
| <b>Latch Material</b>                         | 316 SS   |
| <b>Gasket Material</b>                        | Poured In Place (PIP)<br>Polyurethane Seamless |
| <b>Country of Origin</b>                      | USA  |

## Dimensions

|                           |       |
|---------------------------|-------|
| <b>Height (in)</b>        | 8.0   |
| <b>Width (in)</b>         | 8.0   |
| <b>Depth (in)</b>         | 4.0   |
| <b>Height (mm)</b>        | 203.0 |
| <b>Width (mm)</b>         | 203.0 |
| <b>Depth (mm)</b>         | 102.0 |
| <b>Useable Depth (in)</b> | 4.5   |
| <b>Useable Depth (mm)</b> | 115.0 |

## Standards

---

|  |                            |
|--|----------------------------|
| <b>NEMA 250; UL 50; UL 50e; UL508A</b> | cULus Listed File #E319779 |
| <b>Type</b>                            | 1; 3R; 4; 4X; 6; 6P; 12    |
| <b>IEC 60529</b>                       | IP66; IP68                 |
| <b>IEC 60529</b>                       | cULus Listed File #E362920 |
| <b>Temperature Range °F</b>            | -40°F to +248°F            |
| <b>Temperature Range °C</b>            | -40°C to +120°C            |
| <b>Flammability Rating</b>             | UL94-5VA                   |
| <b>Outdoor Exposure UL746c</b>         | (f1) Rated                 |
| <b>CE</b>                              | Certified                  |

Latch Material  
Stainless Steel