

Enclosures **Heartland Series**

## Polycarbonate Enclosure 20 x 16 x 8 Inches Heartland with Clear Cover with Stainless Steel Latches



**Catalog Number** AH20168CSS

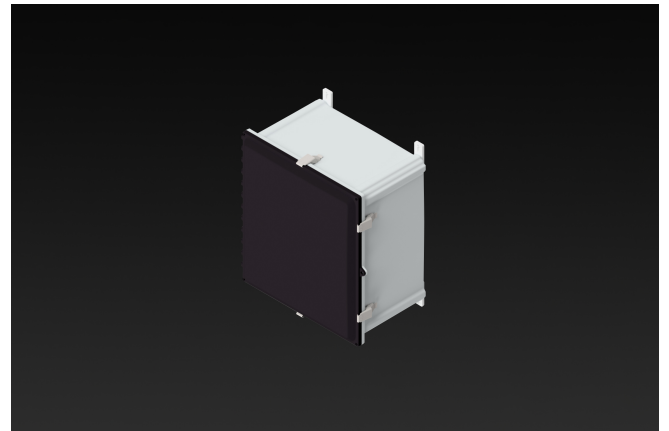
**UPC** 19156411675

List Price

**\$623.49**

### Description

20H x 16W x 8D Inches Heartland (AH) Series is a high performance, polycarbonate enclosure applicable for heavy industrial conditions, but with a refined style suitable for commercial, industrial and OEM design applications. Heartland Series enclosures are rain-tight and watertight rated for use in both interior and exterior applications. This configuration features a clear cover which is hinged, latched and padlockable with stainless steel latches.



### Application

Suitable for heavy industrial; commercial; and OEM applications

### Features

- Latches and hinges do not penetrate enclosure
- Easy to remove lid
- High performance inserts
- integrated padlock hasp
- Flush-fit side mount swing panel and DIN rail system
- Molded in bosses
- Multi-directional mounting feet

- Single SKU with multiple cover attachment options

## General Information

---

<b>Color</b>	Gray
<b>Cover Type</b>	Clear
<b>Mounting Type</b>	Wall Mount
<b>Material</b>	Polycarbonate
<b>Back Panel Screw Size</b>	#10-32x3/8
<b>Back Panel Recommended Torque</b>	16-20 in-lbs.
<b>Back Panel Screw Material</b>	Zinc Plated
<b>Cover Screw Size</b>	#10-32 x 5/8
<b>Cover Screw Recommended Torque</b>	20-24 in-lbs.
<b>Cover Screw Material</b>	304 SS
<b>Mounting Foot Screw Size</b>	1/4-20 x 1/2
<b>Mounting Foot Screw Recommended Torque</b>	10-14 in-lbs.
<b>Installation Mounting Torque</b>	25-30 in-lbs. Max
<b>Metal Inserts</b>	Brass
<b>Hinge Material</b>	Integral Polycarbonate
<b>Latch Material</b>	316 SS
<b>Gasket Material</b>	Poured In Place (PIP) Polyurethane Seamless
<b>Country of Origin</b>	USA

## Dimensions

---

<b>Height (in)</b>	20.0
<b>Width (in)</b>	16.0
<b>Depth (in)</b>	8.0
<b>Height (mm)</b>	508.0
<b>Width (mm)</b>	406.0
<b>Depth (mm)</b>	203.0
<b>Useable Depth (in)</b>	8.7
<b>Useable Depth (mm)</b>	220.0

## Standards

---

**NEMA 250; UL 50; UL 50e;  
UL508A** cULus Listed File #E319779

**Type** 1; 3R; 4; 4X; 12

### IEC 60529

**Temperature Range °F** -40°F to +248°F

**Temperature Range °C** -40°C to +120°C

**Flammability Rating** UL94-5VA

**Outdoor Exposure UL746c** (f1) Rated

**CE** Certified

Latch Material  
Stainless Steel